

## CABTITE CGS M50 BK

**Weidmüller Interface GmbH & Co. KG**

Klingenbergstraße 26

D-32758 Detmold

Germany

[www.weidmueller.com](http://www.weidmueller.com)



For metric M20 to M63 through-holes, the Cabtite cable entry system offers separable cable glands for cables with and without plugs. In case of maintenance or changes in the system, pre-assembled cables with diameters of 2 to 35 mm can be inserted quickly and safely in panels or enclosures. Reliable sealing of IP66 in accordance with DIN EN 60529 and an absolutely secure fitting (strain relief based on DIN EN 62444) is ensured by placing slotted sealing elements with a wave cut around the cable before being inserted into one of the two halves of the cable gland. The separable system ensures easy and fast installation. After inserting the sealing element, the two halves of the cable gland are simply snapped together. A locknut, which is also separable, on the inside of the panel ensures a reliable and secure hold.

### General ordering data

Version	separable cable gland, Cabtite (cable entry system), Polyamide, glass fibre-reinforced, Deep black, Height: 24.7 mm, M 50, -40 °C...120 °C, IP66
Order No.	<a href="#">2584130000</a>
Type	CABTITE CGS M50 BK
GTIN (EAN)	4050118616101
Qty.	5 items

**CABTITE CGS M50 BK**

**Weidmüller Interface GmbH & Co. KG**  
 Klingenbergstraße 26  
 D-32758 Detmold  
 Germany

www.weidmueller.com

**Technical data**

**Approvals**

Approvals



ROHS Conform

**Dimensions and weights**

Depth	39.7 mm	Depth (inches)	1.563 inch
Height	24.7 mm	Height (inches)	0.9724 inch
Width	72 mm	Width (inches)	2.8346 inch
Length	39.7 mm	Length (inches)	1.563 inch
Net weight	29.1 g		

**Temperatures**

Operating temperature -40 °C... 120 °C

**Environmental Product Compliance**

RoHS Compliance Status Compliant without exemption  
 REACH SVHC No SVHC above 0.1 wt%

**General information**

Tightening torque, max.	7 Nm	Tightening torque, min.	6.8 Nm
Silicone	No	UL 94 flammability rating	V-0
Pitch of thread	1.5 mm	Halogen	No
AF size 1	68 mm	AF size 2	58 mm
Protection degree	IP66	Basic material	Polyamide, glass fibre-reinforced
Sealing	TPE	External thread	M 50
Length of thread	15 mm	Opening diameter	50 mm
Sealing element	1 large sealing element or 4 small sealing elements		

**Classifications**

ETIM 8.0	EC000441	ETIM 9.0	EC000441
ETIM 10.0	EC000441	ECLASS 14.0	27-14-08-01
ECLASS 15.0	27-14-08-01		

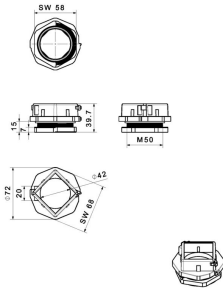
**CABTITE CGS M50 BK**

**Weidmüller Interface GmbH & Co. KG**  
Klingenbergstraße 26  
D-32758 Detmold  
Germany

**Drawings**

[www.weidmueller.com](http://www.weidmueller.com)

**Dimensioned drawing**



## CABTITE CGS M50 BK

**Weidmüller Interface GmbH & Co. KG**  
 Klingenbergstraße 26  
 D-32758 Detmold  
 Germany

www.weidmueller.com

## Accessories

### Inlays

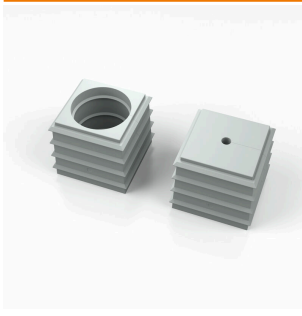


The pluggable click inlays allow the frame openings to be configured as required for use with small or large sealing elements. An audible "click" confirms correct installation. This means that the Cabtite cable entry system can be variably configured for different requirements (cables, conductors, hoses, pneumatic and hydraulic lines).

#### General ordering data

Type	CABTITE GI X BK	Version	
Order No.	<a href="#">2584290000</a>	Inlay, Cabtite (cable entry system), Polyamide, glass fibre-reinforced,	
GTIN (EAN)	4050118616439	Deep black, Height: 44 mm, Width: 44 mm, Depth: 17.5 mm, -40 °C...	
Qty.	5 ST	120 °C, IP66	

### SE small 20x20mm in grey



Whether a large or small cable diameter – Cabtite always offers the right seal insert.

The conical shape of the sealing elements allows the previously positioned snap-in grid inlays to be pushed in easily from the inside to the outside. It reliably seals intermediate spaces and provides strain relief in accordance with DIN EN 62444. The seal inserts combined with the frames achieve an IP 66 degree of protection. As a result of its slotted design with wave cut, it is especially suitable for pre-assembled cables.

- The black seal inserts are designed for a particularly high operating temperature and offer fire safety class UL 94 HB
- The grey sealing elements comply with fire safety class UL 94 V0 and are therefore suitable for the demands of the railway industry
- By using multiple inserts, two or more cables, as well as special cables, can be passed through a sealing element

#### General ordering data

Type	CABTITE BSE SML GY	Version	
Order No.	<a href="#">2583350000</a>	Sealing element, Cabtite (cable entry system), TPE, Light Grey, Height:	
GTIN (EAN)	4050118615609	20.3 mm, Width: 20.3 mm, Depth: 17.7 mm, -40 °C...90 °C, IP66	
Qty.	10 ST		
Type	CABTITE SE 5-6 SML GY	Version	
Order No.	<a href="#">2583450000</a>	Sealing element, Cabtite (cable entry system), TPE, Light Grey, Height:	
GTIN (EAN)	4050118616538	20.3 mm, Width: 20.3 mm, Depth: 17.7 mm, -40 °C...90 °C, IP66	
Qty.	10 ST		
Type	CABTITE SE 6-7 SML GY	Version	
Order No.	<a href="#">2583460000</a>	Sealing element, Cabtite (cable entry system), TPE, Light Grey, Height:	
GTIN (EAN)	4050118616668	20.3 mm, Width: 20.3 mm, Depth: 17.7 mm, -40 °C...90 °C, IP66	
Qty.	10 ST		

## CABTITE CGS M50 BK

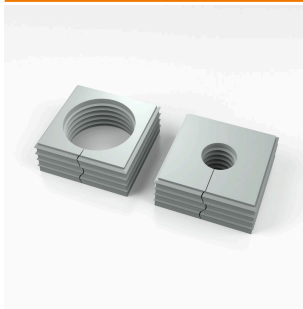
**Weidmüller Interface GmbH & Co. KG**  
 Klingenbergstraße 26  
 D-32758 Detmold  
 Germany

www.weidmueller.com

## Accessories

Type	CABTITE SE 2/5-6 SML GY	Version
Order No.	<a href="#">2584890000</a>	Sealing element, Cabtite (cable entry system), TPE, Light Grey, Height: 20.3 mm, Width: 20.3 mm, Depth: 17.7 mm, -40 °C...90 °C, IP66
GTIN (EAN)	4050118616781	
Qty.	10 ST	

### SE large 40x40mm in grey



Whether a large or small cable diameter – Cabtite always offers the right seal insert.

The conical shape of the sealing elements allows the previously positioned snap-in grid inlays to be pushed in easily from the inside to the outside. It reliably seals intermediate spaces and provides strain relief in accordance with DIN EN 62444. The seal inserts combined with the frames achieve an IP 66 degree of protection. As a result of its slotted design with wave cut, it is especially suitable for pre-assembled cables.

- The black seal inserts are designed for a particularly high operating temperature and offer fire safety class UL 94 HB
- The grey sealing elements comply with fire safety class UL 94 V0 and are therefore suitable for the demands of the railway industry
- By using multiple inserts, two or more cables, as well as special cables, can be passed through a sealing element

### General ordering data

Type	CABTITE BSE LRG GY	Version
Order No.	<a href="#">2584520000</a>	Sealing element, Cabtite (cable entry system), TPE, Light Grey, Height: 42.8 mm, Width: 42.8 mm, Depth: 17.7 mm, -40 °C...90 °C, IP66
GTIN (EAN)	4050118616330	
Qty.	10 ST	
Type	CABTITE SE 19-20 LRG GY	Version
Order No.	<a href="#">2584460000</a>	Sealing element, Cabtite (cable entry system), TPE, Light Grey, Height: 42.8 mm, Width: 42.8 mm, Depth: 17.7 mm, -40 °C...90 °C, IP66
GTIN (EAN)	4050118616491	
Qty.	10 ST	

## CABTITE CGS M50 BK

**Weidmüller Interface GmbH & Co. KG**  
 Klingenbergstraße 26  
 D-32758 Detmold  
 Germany

## Accessories

www.weidmueller.com

### SE small 20x20mm in black



Whether a large or small cable diameter – Cabtite always offers the right seal insert.

The conical shape of the sealing elements allows the previously positioned snap-in grid inlays to be pushed in easily from the inside to the outside. It reliably seals intermediate spaces and provides strain relief in accordance with DIN EN 62444. The seal inserts combined with the frames achieve an IP 66 degree of protection. As a result of its slotted design with wave cut, it is especially suitable for pre-assembled cables.

- The black seal inserts are designed for a particularly high operating temperature and offer fire safety class UL 94 HB
- The grey sealing elements comply with fire safety class UL 94 V0 and are therefore suitable for the demands of the railway industry
- By using multiple inserts, two or more cables, as well as special cables, can be passed through a sealing element

### General ordering data

Type	CABTITE BSE SML BK	Version
Order No.	<a href="#">2584790000</a>	Sealing element, Cabtite (cable entry system), TPE, Deep black,
GTIN (EAN)	4050118616057	Height: 20.3 mm, Width: 20.3 mm, Depth: 17.7 mm, -40 °C...120 °C,
Qty.	10 ST	IP66
Type	CABTITE SE 7-8 SML BK	Version
Order No.	<a href="#">2584670000</a>	Sealing element, Cabtite (cable entry system), TPE, Deep black,
GTIN (EAN)	4050118616989	Height: 20.3 mm, Width: 20.3 mm, Depth: 17.7 mm, -40 °C...120 °C,
Qty.	10 ST	IP66
Type	CABTITE SE 9-10 SML BK	Version
Order No.	<a href="#">2584080000</a>	Sealing element, Cabtite (cable entry system), TPE, Deep black,
GTIN (EAN)	4050118616309	Height: 20.3 mm, Width: 20.3 mm, Depth: 17.7 mm, -40 °C...120 °C,
Qty.	10 ST	IP66
Type	CABTITE SE 4/4-5 SML BK	Version
Order No.	<a href="#">2583560000</a>	Sealing element, Cabtite (cable entry system), TPE, Deep black,
GTIN (EAN)	4050118616897	Height: 20.3 mm, Width: 20.3 mm, Depth: 17.7 mm, -40 °C...120 °C,
Qty.	10 ST	IP66

## CABTITE CGS M50 BK

**Weidmüller Interface GmbH & Co. KG**  
 Klingenbergstraße 26  
 D-32758 Detmold  
 Germany

www.weidmueller.com

## Accessories

### SE large 40x40mm in black



Whether a large or small cable diameter – Cabtite always offers the right seal insert.

The conical shape of the sealing elements allows the previously positioned snap-in grid inlays to be pushed in easily from the inside to the outside. It reliably seals intermediate spaces and provides strain relief in accordance with DIN EN 62444. The seal inserts combined with the frames achieve an IP 66 degree of protection. As a result of its slotted design with wave cut, it is especially suitable for pre-assembled cables.

- The black seal inserts are designed for a particularly high operating temperature and offer fire safety class UL 94 HB
- The grey sealing elements comply with fire safety class UL 94 V0 and are therefore suitable for the demands of the railway industry
- By using multiple inserts, two or more cables, as well as special cables, can be passed through a sealing element

### General ordering data

Type	CABTITE BSE LRG BK	Version
Order No.	<a href="#">2583900000</a>	Sealing element, Cabtite (cable entry system), TPE, Deep black,
GTIN (EAN)	4050118616378	Height: 42.8 mm, Width: 42.8 mm, Depth: 17.7 mm, -40 °C...120 °C,
Qty.	10 ST	IP66
Type	CABTITE CSE 7-24 LRG BK	Version
Order No.	<a href="#">2583500000</a>	Sealing element, Cabtite (cable entry system), TPE, Deep black,
GTIN (EAN)	4050118615975	Height: 42.8 mm, Width: 42.8 mm, Depth: 63 mm, -40 °C...120 °C,
Qty.	10 ST	IP66

### Blanking plug

The blanking plugs are used for the safe closing of unneeded cable passages in the sealing elements.



### General ordering data

Type	CABTITE BP 5MM PA	Version
Order No.	<a href="#">2652330000</a>	Blind plug, Cabtite (cable entry system), Polyamide, white, Height: 12
GTIN (EAN)	4050118661835	mm, Width: 5 mm, Depth: 12 mm, -40 °C...120 °C, IP66
Qty.	25 ST	
Type	CABTITE BP 6MM PA	Version
Order No.	<a href="#">2652340000</a>	Blind plug, Cabtite (cable entry system), Polyamide, white, Height: 16
GTIN (EAN)	4050118661842	mm, Width: 6 mm, Depth: 16 mm, -40 °C...120 °C, IP66
Qty.	25 ST	

## CABTITE CGS M50 BK

**Weidmüller Interface GmbH & Co. KG**  
Klingenbergstraße 26  
D-32758 Detmold  
Germany

www.weidmueller.com

### Accessories

Type	CABTITE BP 7MM PA	Version
Order No.	<a href="#">2652350000</a>	Blind plug, Cabtite (cable entry system), Polyamide, white, Height: 16 mm, Width: 7 mm, Depth: 16 mm, -40 °C...120 °C, IP66
GTIN (EAN)	4050118662450	
Qty.	25 ST	
Type	CABTITE BP 8MM PA	Version
Order No.	<a href="#">2652360000</a>	Blind plug, Cabtite (cable entry system), Polyamide, white, Height: 16 mm, Width: 8 mm, Depth: 16 mm, -40 °C...120 °C, IP66
GTIN (EAN)	4050118662467	
Qty.	25 ST	
Type	CABTITE BP 9MM PA	Version
Order No.	<a href="#">2652370000</a>	Blind plug, Cabtite (cable entry system), Polyamide, white, Height: 16 mm, Width: 9 mm, Depth: 16 mm, -40 °C...120 °C, IP66
GTIN (EAN)	4050118662474	
Qty.	25 ST	
Type	CABTITE BP 10MM PA	Version
Order No.	<a href="#">2652380000</a>	Blind plug, Cabtite (cable entry system), Polyamide, white, Height: 16 mm, Width: 10 mm, Depth: 16 mm, -40 °C...120 °C, IP66
GTIN (EAN)	4050118662481	
Qty.	25 ST	

### Round splitting stamp for metric cable glands



Weidmüller punching tools should be your first choice for making cut-outs in your electrical cabinets!

- PG cable glands
- M cable glands
- Special cable glands

Not suitable for stainless steel!

### General ordering data

Type	KOS-M50	Version
Order No.	<a href="#">1548410000</a>	Sheet holes
GTIN (EAN)	4050118353976	
Qty.	1 ST	

### Cabtite - Separable Cable Glands



For metric M20 to M63 through-holes, the Cabtite cable entry system offers separable cable glands for cables with and without plugs. In case of maintenance or changes in the system, pre-assembled cables with diameters of 2 to 35 mm can be inserted quickly and safely in panels or enclosures. Reliable sealing of IP66 in accordance with DIN EN 60529 and an absolutely secure fitting (strain relief based on DIN EN 62444) is ensured by placing slotted sealing elements with a wave cut around the cable before being inserted into one of the two halves of the cable gland. The separable system ensures easy and fast installation. After inserting the sealing element, the two halves of the cable gland are simply snapped together. A locknut, which is also separable, on the inside of the panel ensures a reliable and secure hold.

## CABTITE CGS M50 BK

**Weidmüller Interface GmbH & Co. KG**  
Klingenbergstraße 26  
D-32758 Detmold  
Germany

[www.weidmueller.com](http://www.weidmueller.com)

## Accessories

### General ordering data

Type	CABTITE LNS M50 BK	Version	
Order No.	<a href="#">2584030000</a>		
GTIN (EAN)	4050118616286		
Qty.	5 ST		
			separable locknut, Cabtite (cable entry system), Polyamide, glass fibre-reinforced, Deep black, Height: 58 mm, Width: 58 mm, Depth: 7 mm, -40 °C...120 °C