

CH20M22 S PPSC BL 2013**Weidmüller Interface GmbH & Co. KG**Klingenbergstraße 26
D-32758 Detmold
Germany

www.weidmueller.com

Product image

The side element of the CH2OM housing offers you the option of an individual structure that can be flexibly adapted to your needs. A particularly practical advantage is that slots that are not required can simply be closed with covers. This not only ensures a clean and tidy appearance, but also protects against dust and other environmental influences. Take advantage of the versatility of the CH2OM housing to design your projects efficiently and according to your ideas!

General ordering data

Version	Side element, OMNIMATE Housing - series CH2OM light blue, Side element, Width: 22.5 mm
Order No.	2418660000
Type	CH20M22 S PPSC BL 2013
GTIN (EAN)	4032248898923
Qty.	10 items

CH20M22 S PPSC BL 2013

Weidmüller Interface GmbH & Co. KG
Klingenbergstraße 26
D-32758 Detmold
Germany

www.weidmueller.com

Technical data

Approvals

ROHS	Conform
------	---------

Dimensions and weights

Depth	105.5 mm	Depth (inches)	4.1535 inch
Height	22.8 mm	Height (inches)	0.8976 inch
Width	22.5 mm	Width (inches)	0.8858 inch
Net weight	8.8 g		

Temperatures

Ambient temperature	-25 °C...85 °C	Operating temperature range	-40...120 °C
Humidity	5 - 93% rel. humidity, Tu = 40°C, no condensation		

Environmental Product Compliance

RoHS Compliance Status	Compliant without exemption
REACH SVHC	No SVHC above 0.1 wt%

Material data

UL 94 flammability rating	V-0	Insulating material	PA 66 GF 30
Insulating material group	I	Surface finish	untreated
Basic material	Plastic	Comparative Tracking Index (CTI)	600 ≤ CTI

General data

Colour	light blue	Protection degree	IP20 in installed state
Colour chart (similar)	RAL 5012	Information regarding whole assembly, see referenced articles	CH20M22 B BK/OR 2010
Encapsulation option	No		

Component properties

Cut out as preparation for functional portNo integrated		Number of poles, max.	8
Number of ventilation openings	1	Number of slots for female plugs	2
Number of connection levels	2		

Classifications

ETIM 8.0	EC001031	ETIM 9.0	EC001031
ETIM 10.0	EC001031	ECLASS 14.0	27-19-06-02
ECLASS 15.0	27-19-06-02		

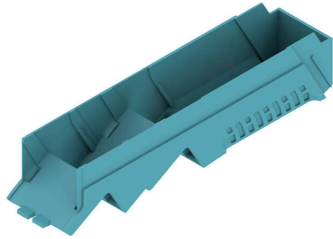
CH20M22 S PPSC BL 2013

Weidmüller Interface GmbH & Co. KG
Klingenbergstraße 26
D-32758 Detmold
Germany

www.weidmueller.com

Drawings

Product image



Product image



Dimensioned drawing



CH20M22 S PPSC BL 2013

Weidmüller Interface GmbH & Co. KG

Klingenbergstraße 26

D-32758 Detmold

Germany

Accessories

www.weidmueller.com

CH20M AD SHL 5.00/04 - Side element cover for CH20M22, CH20M45, CH20M67


Future-proof solutions for industrial electronics for mounting in the control cabinet

Electronichousings are crucial for the integration of electronic assemblies in the control cabinet. They protect sensitive components and ensure reliable connections. Thanks to high-quality materials, they offer long-term solutions for industrial applications.

Your advantages:

Flexibility: Scalable solutions for different requirements

Safety: Robust design to protect your electronics

Efficiency: Simple installation and optimized connection technology

Housing solutions for every application:

Our portfolio includes modular housings (e.g. CH20M), small housings and profile housings designed for control, signal conversion and safety applications. These housings offer customizable designs, easy mounting and high connection capacity.

Customization:

In addition to standard solutions, we offer customization in design, color and printing. The Weidmüller Configurator enables individual design.

Our service:

We offer expert advice and technical support for your projects. In the download area you will find CAD data, data sheets and installation instructions for efficient integration.

General ordering data

Type	CH20M AD SHL 5.00/04 AG...	Version
Order No.	1472830000	Hood, OMNIMATE Housing - series CH20M Agate grey, Side element
GTIN (EAN)	4050118279429	cover, Width: 22.5 mm
Qty.	50 ST	
Type	CH20M AD SHL 5.00/04 BK...	Version
Order No.	1221310000	Hood, OMNIMATE Housing - series CH20M black, Side element
GTIN (EAN)	4050118004830	cover, Width: 22.5 mm
Qty.	50 ST	