

IE-PH-V14M-RJ

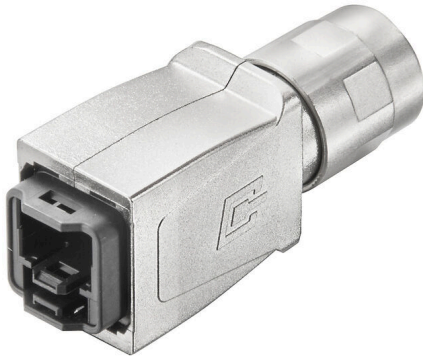
Weidmüller Interface GmbH & Co. KG

Klingenbergstraße 26

D-32758 Detmold

Germany

www.weidmueller.com



PushPull plug-in connector according to IEC
61076-3-117 ver.14 (PROFINET), metal, RJ45 empty
housing

General ordering data

Version	Empty enclosure
Order No.	1011560000
Type	IE-PH-V14M-RJ
GTIN (EAN)	4032248718696
Qty.	10 items

Technical data

Approvals

Approvals



ROHS Conform

UL File Number Search [UL Website](#)

Certificate no. (cULus) E316369

Dimensions and weights

Depth	72.45 mm	Depth (inches)	2.8524 inch
Height	26.8 mm	Height (inches)	1.0551 inch
Width	22.3 mm	Width (inches)	0.878 inch
Net weight	57.5 g		

Temperatures

Storage temperature	Operating temperature	-40 °C...70 °C
Installation temperature		

Environmental Product Compliance

RoHS Compliance Status	Compliant with exemption
RoHS Exemption (if applicable/known)	6c
REACH SVHC	Lead 7439-92-1
SCIP	4f3aae94-c2bc-4010-b63b-5b114ba6bd55

General data

Colour	Miscellaneous	Housing main material	Zinc diecast
Protection degree	IP67	Plugging cycles	750
Composition	Plug housing with labelling tag holder: 9*11 mm; suitable for holding RJ45 and fibre-optic inserts		

General standards

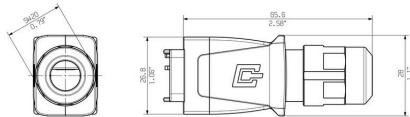
Connector standard	IEC 61076-3-117 Var. 14	Certificate no. (cULus)	E316369
--------------------	-------------------------	-------------------------	---------

Classifications

ETIM 8.0	EC001031	ETIM 9.0	EC001031
ETIM 10.0	EC001031	ECLASS 14.0	27-19-01-04
ECLASS 15.0	27-19-01-04		

Drawings

Dimensioned drawing



IE-PH-V14M-RJ

Weidmüller Interface GmbH & Co. KG
 Klingenbergstraße 26
 D-32758 Detmold
 Germany

www.weidmueller.com

Accessories

RJ45



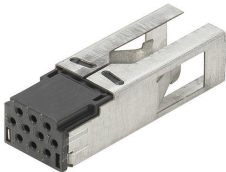
RJ45 inserts for plug-in connectors ver.1 / 4 / 5 / 14, HDC and junction boxes IE-OM...; IE-OP...; IE-CC...

General ordering data

Type	IE-PI-RJ45-FH	Version
Order No.	1962730000	Plug insert RJ45 IDC, Plug insert RJ45, no tools required, TIA-568A,
GTIN (EAN)	4032248654017	EIA/TIA T568 B, PROFINET
Qty.	10 ST	
Type	IE-PI-RJ45-TH	Version
Order No.	1962720000	Plug insert RJ45 IDC, Plug insert RJ45, crimp
GTIN (EAN)	4032248644834	
Qty.	10 ST	

Hybrid

Hybrid, 10-pole. Inserts for plug-in connectors Variant 14



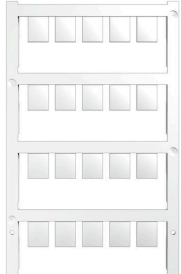
General ordering data

Type	IE-PI-HYB-10P	Version
Order No.	1068990000	Insert, for plug insert, Hybrid
GTIN (EAN)	4032248823963	
Qty.	1 ST	
Type	IE-PIC-HYB-S-0,5-300	Version
Order No.	1096180000	Crimp contact, for plug insert, Hybrid
GTIN (EAN)	4032248869152	
Qty.	300 ST	

Accessories

www.weidmueller.com

Blank



ESG is the tried-and-tested marker in MultiCard format for use on many well-known electrical devices. The result is high-quality device marking with a high-contrast appearance.

Various types are available for devices from manufacturers like Siemens, ABB, Beckhoff etc.

Advantages at a glance:

- Tags for universal usage, self-adhesive or clip-on tags, depending on type
- For aligned equipment, e.g. circuit breakers, we supply ESG markers for clipping onto tag rails
- Individual laser-quality printing according to specifications

For custom printing: Please send us a file of our labeling software M-Print PRO or M-Print PRO Online (without installation) for your labeling specifications.

General ordering data

Type	ESG 9/11 K MC NE WS	Version	
Order No.	1857440000		ESG, Device markers x 11 mm, PA 66, Colour: white, Self-adhesive
GTIN (EAN)	4032248402731		
Qty.	200 ST		