

**CRMKIT P 24VAC 4CO L**

**Weidmüller Interface GmbH & Co. KG**  
 Klingenbergstraße 26  
 D-32758 Detmold  
 Germany

www.weidmueller.com



Similar to illustration

**General ordering data**

|            |   |
|------------|---|
| Version    | CUBESERIES, Number of contacts: 4, CO contact AgNi, Rated control voltage: 24 V AC, Continuous current: 7 A, PUSH IN, Test button available: No |
| Order No.  | <a href="#">3137180000</a>  |
| Type       | CRMKIT P 24VAC 4CO L  |
| GTIN (EAN) | 4099987361644   |
| Qty.       | 5 items   |

**CRMKIT P 24VAC 4CO L**

**Weidmüller Interface GmbH & Co. KG**  
 Klingenbergstraße 26  
 D-32758 Detmold  
 Germany

www.weidmueller.com

**Technical data**

**Approvals**

Approvals



ROHS Conform

**Dimensions and weights**

|            |         |                 |             |
|------------|---------|-----------------|-------------|
| Depth      | 72.5 mm | Depth (inches)  | 2.8543 inch |
| Height     | 97 mm   | Height (inches) | 3.8189 inch |
| Width      | 31 mm   | Width (inches)  | 1.2205 inch |
| Net weight | 112 g   |                 |             |

**Temperatures**

|                       |                     |                |
|-----------------------|---------------------|----------------|
| Storage temperature   | Ambient temperature | -20 °C...55 °C |
| Operating temperature |                     |                |

**Environmental Product Compliance**

|                        |                             |
|------------------------|-----------------------------|
| RoHS Compliance Status | Compliant without exemption |
| REACH SVHC             | No SVHC above 0.1 wt%       |

**Control side**

|  |           |                                       |              |
|--|-----------|---------------------------------------|--------------|
| Rated control voltage  | 24 V AC   | Rated current AC                      | 72.6 mA      |
| Power rating   | 1.8 VA    | Coil resistance                       | 158 Ω ± 10 % |
| Status indicator   | Green LED | Input frequency                       | 50...60Hz    |
| Coil voltage of the replacement relay deviating from the rated control voltage | No        | Coil voltage of the replacement relay | 24 V AC      |

**Load side**

|   |                                      |   |                            |
|---|--------------------------------------|---|----------------------------|
| Rated switching voltage                 | 250 V AC                             | Continuous current                      | 7 A                        |
| Max. switching voltage, AC              | 250 V                                | Max. switching voltage, DC              | 250 V                      |
| Inrush current                          | 16 A / 20 ms                         | AC switching capacity (resistive), max. | 1500                       |
| DC switching capacity (resistive), max. | 168 W @ 24 V                         | Switch-on delay                         | ≤ 20 ms                    |
| Switch-off delay                        | ≤ 12 ms                              | Contact type                            | 4 CO contact (AgNi)        |
| Mechanical service life                 | 2 x 10 <sup>7</sup> switching cycles | Min. switching power                    | 100 mA @ 5 V, 10 mA @ 12 V |

**General data**

|                                    |                           |             |
|------------------------------------|---------------------------|-------------|
| Operating altitude                 | ≤ 2000 m, above sea level |             |
| Mounting rail                      | TS 35                     |             |
| Test button available              | No                        |             |
| Colour                             | black                     |             |
| UL94 flammability rating component | Component                 | Socket      |
|                                    | UL94 flammability rating  | V-0         |
|                                    | Component                 | Relay cover |
|                                    | UL94 flammability rating  | V-2         |

## CRMKIT P 24VAC 4CO L

**Weidmüller Interface GmbH & Co. KG**  
 Klingenbergstraße 26  
 D-32758 Detmold  
 Germany

www.weidmueller.com

## Technical data

### Insulation coordination

|  |                  |  |                  |
|--|------------------|--|------------------|
| Pollution severity                               | 2                | Surge voltage category                       | II               |
| Dielectric strength for control side - load side | 4 kVeff / 1 Min. | Dielectric strength of neighbouring contacts | 3 KVeFF / 1 Min. |
| Dielectric strength to mounting rail             | 3 kVeff / 1 min. | Impulse withstand voltage                    | 4 kV (1.2/50 µs) |
| Protection degree                                | IP20             |  |                  |

### Connection data

|                                       |                     |                                       |                     |
|---------------------------------------|---------------------|---------------------------------------|---------------------|
| Wire connection method                | PUSH IN             | Stripping length, rated connection    | 8 mm                |
| Clamping range, rated connection      | 1.5 mm <sup>2</sup> | Clamping range, min.                  | 0.5 mm <sup>2</sup> |
| Clamping range, max.                  | 1.5 mm <sup>2</sup> | Wire cross-section, solid, min.       | 0.5 mm <sup>2</sup> |
| Wire cross-section, solid, min. (AWG) | AWG 20              | Wire cross-section, solid, max. (AWG) | AWG 16              |
| Twin wire-end ferrules, max.          | 1.5 mm <sup>2</sup> | Blade size                            | 0.6 x 3.5 mm        |

### Classifications

|             |             |             |             |
|-------------|-------------|-------------|-------------|
| ETIM 8.0    | EC001437    | ETIM 9.0    | EC001437    |
| ETIM 10.0   | EC001437    | ECLASS 14.0 | 27-37-16-01 |
| ECLASS 15.0 | 27-37-16-01 |             |             |

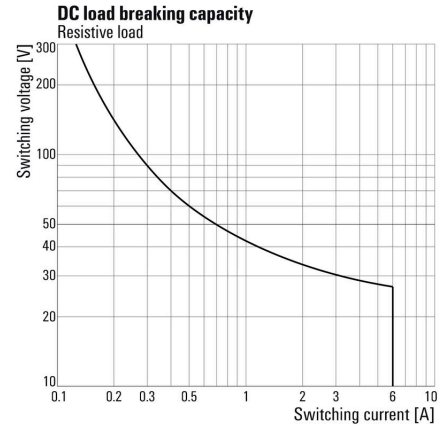
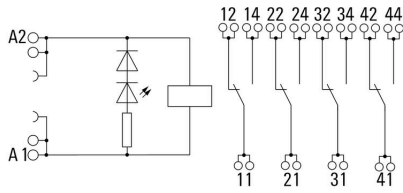
CRMKIT P 24VAC 4CO L

Weidmüller Interface GmbH & Co. KG  
 Klingenbergstraße 26  
 D-32758 Detmold  
 Germany

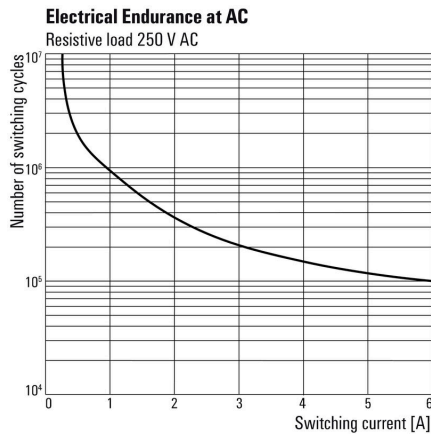
Drawings

www.weidmueller.com

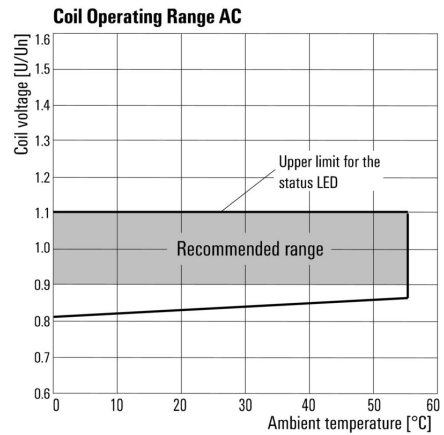
Graph



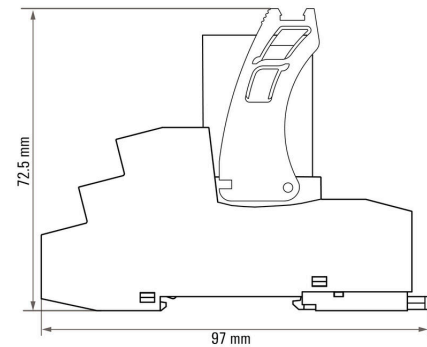
Graph



Graph



Dimensional drawing





## CRMKIT P 24VAC 4CO L

**Weidmüller Interface GmbH & Co. KG**  
 Klingenbergstraße 26  
 D-32758 Detmold  
 Germany

www.weidmueller.com

## Accessories

### Cross-connections



### General ordering data

|            |                            |                             |
|------------|----------------------------|-----------------------------|
| Type       | CXX JMP 2P BL              | Version                     |
| Order No.  | <a href="#">3053260000</a> | CUBESERIES, Cross-connector |
| GTIN (EAN) | 4099987023085              |                             |
| Qty.       | 30 ST                      |                             |
| Type       | CXX JMP 2P RD              | Version                     |
| Order No.  | <a href="#">3053250000</a> | CUBESERIES, Cross-connector |
| GTIN (EAN) | 4099987023078              |                             |
| Qty.       | 30 ST                      |                             |
| Type       | CXM CCP 2P BL              | Version                     |
| Order No.  | <a href="#">3053230000</a> | CUBESERIES, Cross-connector |
| GTIN (EAN) | 4099987023054              |                             |
| Qty.       | 20 ST                      |                             |
| Type       | CXM CCP 2P RD              | Version                     |
| Order No.  | <a href="#">3053220000</a> | CUBESERIES, Cross-connector |
| GTIN (EAN) | 4099987023047              |                             |
| Qty.       | 20 ST                      |                             |
| Type       | CXM CCP 8P BL              | Version                     |
| Order No.  | <a href="#">3053210000</a> | CUBESERIES, Cross-connector |
| GTIN (EAN) | 4099987023030              |                             |
| Qty.       | 10 ST                      |                             |
| Type       | CXM CCP 8P RD              | Version                     |
| Order No.  | <a href="#">3053200000</a> | CUBESERIES, Cross-connector |
| GTIN (EAN) | 4099987023023              |                             |
| Qty.       | 10 ST                      |                             |

### Slotted screwdriver



VDE insulated slot-head screwdriver, SDI DIN 7437, ISO 2380/2, drive output acc. to DIN 5264, ISO 2380/1.  
 SoftFinish grip

## CRMKIT P 24VAC 4CO L

**Weidmüller Interface GmbH & Co. KG**  
 Klingenbergstraße 26  
 D-32758 Detmold  
 Germany

www.weidmueller.com

## Accessories

### General ordering data

|            |                            |   |
|------------|----------------------------|---|
| Type       | SDIS 0.6X3.5X100           | Version   |
| Order No.  | <a href="#">2749810000</a> | Screwdriver, Blade width (B): 3.5 mm, Blade length: 100 mm, Blade thickness (A): 0.6 mm   |
| GTIN (EAN) | 4050118897012              |   |
| Qty.       | 1 ST                       |   |
| Type       | SDIS SLIM 0.6X3.5X100      | Version   |
| Order No.  | <a href="#">2749610000</a> | Mounting tool, Blade width (B): 3.5 mm, Blade length: 100 mm, Blade thickness (A): 0.6 mm |
| GTIN (EAN) | 4050118896350              |   |
| Qty.       | 1 ST                       |   |

### Blank



MultiFit is the Weidmüller marker system used for other makes of terminals. Similar to the Weidmüller Dekafix, the markers of the MultiFit family are available ready-for-use with standard printing.

We recommend to carry out a test with sample markers on the terminals used when using MultiFit for the first time.

- One marker, suitable for different makes of terminals.
- Ready-to-use markers with standard printing
- Blank markers for printing with the PrintJet CONNECT or Plotter
- Delivery of individually printed markers according to customer CAE data or specifications
- One marking system for all applications

For custom printing: Please send us a file of our labeling software M-Print PRO or M-Print PRO Online (without installation) for your labeling specifications.

### General ordering data

|            |                            |  |
|------------|----------------------------|--|
| Type       | MF 10/5 MC NE WS           | Version  |
| Order No.  | <a href="#">1677160000</a> | MultiFit, Terminal marker, 10 x 5 mm, Pitch in mm (P): 5.00 Phoenix, Wieland, Legrand, Telemecanique, Entelec, white |
| GTIN (EAN) | 4008190475505              |  |
| Qty.       | 600 ST                     |  |
| Type       | MF 10/6 MC NE WS           | Version  |
| Order No.  | <a href="#">1677220000</a> | MultiFit, Terminal marker, 10 x 6 mm, Pitch in mm (P): 6.00 Phoenix, Wieland, Legrand, Telemecanique, Entelec, white |
| GTIN (EAN) | 4008190475529              |  |
| Qty.       | 600 ST                     |  |
| Type       | MF 10/8 MC NE WS           | Version  |
| Order No.  | <a href="#">1868440000</a> | MultiFit, Terminal marker, 10 x 8 mm, Pitch in mm (P): 8.00 Phoenix, Entelec, white                                  |
| GTIN (EAN) | 4032248440023              |  |
| Qty.       | 350 ST                     |  |

**Accessories**

www.weidmueller.com

**MultiFit**



**MultiMark MultiFit**

For connectors from competitors.

The elastic surface finish makes for simple installation. This special material enables the strips to be stretched to accommodate slight variations in spacing, especially with long terminal blocks.

A print resolution of 300 dpi also produces a very legible script. Your benefits with MultiMark

- Firm hold and durable printing
- Continuous strips save installation time
- Easy mounting thanks to an innovative composite material
- Large label field for optimal legibility
- High flexibility thanks to manufacturer independence
- Firm hold and durable printing
- Continuous strips save installation time
- Easy mounting thanks to an innovative composite material
- Large label field for optimal legibility
- High flexibility thanks to manufacturer independence
- ] • Firm hold and durable printing
- Continuous strips save installation time
- Easy mounting thanks to an innovative composite material
- Large label field for optimal legibility
- High flexibility thanks to manufacturer independence

**General ordering data**

|            |                            |   |
|------------|----------------------------|---|
| Type       | MF 10/3.5 MM WS            | Version   |
| Order No.  | <a href="#">2885970000</a> | Terminal marker, 10 x 3.5 mm, Pitch in mm (P): 3.50 white |
| GTIN (EAN) | 4064675854579              |   |
| Qty.       | 850 ST                     |   |
| Type       | MF 10/4.2 MM WS            | Version   |
| Order No.  | <a href="#">2885980000</a> | Terminal marker, 10 x 4.2 mm, Pitch in mm (P): 4.20 white |
| GTIN (EAN) | 4064675854586              |   |
| Qty.       | 750 ST                     |   |

## CRMKIT P 24VAC 4CO L

**Weidmüller Interface GmbH & Co. KG**  
 Klingenbergstraße 26  
 D-32758 Detmold  
 Germany

www.weidmueller.com

## Accessories

## Blank



MultiFit is the Weidmüller marker system used for other makes of terminals. Similar to the Weidmüller Dekafix, the markers of the MultiFit family are available ready-for-use with standard printing.

We recommend to carry out a test with sample markers on the terminals used when using MultiFit for the first time.

- One marker, suitable for different makes of terminals.
- Ready-to-use markers with standard printing
- Blank markers for printing with the PrintJet CONNECT or Plotter
- Delivery of individually printed markers according to customer CAE data or specifications
- One marking system for all applications

For custom printing: Please send us a file of our labeling software M-Print PRO or M-Print PRO Online (without installation) for your labeling specifications.

## General ordering data

|            |                            |   |  |
|------------|----------------------------|---|--|
| Type       | MF 10/10 MC NE WS          | Version   |  |
| Order No.  | <a href="#">1856760000</a> | MultiFit, Terminal marker, 10 x 10 mm, Pitch in mm (P): 10.00 |  |
| GTIN (EAN) | 4032248401031              | Phoenix, Entrelec, white                                      |  |
| Qty.       | 200 ST                     |   |  |

## MultiFit



## MultiMark MultiFit

For connectors from competitors.

The elastic surface finish makes for simple installation. This special material enables the strips to be stretched to accommodate slight variations in spacing, especially with long terminal blocks.

A print resolution of 300 dpi also produces a very legible script. Your benefits with MultiMark

- Firm hold and durable printing
- Continuous strips save installation time
- Easy mounting thanks to an innovative composite material
- Large label field for optimal legibility
- High flexibility thanks to manufacturer independence
- Firm hold and durable printing
- Continuous strips save installation time
- Easy mounting thanks to an innovative composite material
- Large label field for optimal legibility
- High flexibility thanks to manufacturer independence
- Firm hold and durable printing
- Continuous strips save installation time
- Easy mounting thanks to an innovative composite material
- Large label field for optimal legibility
- High flexibility thanks to manufacturer independence

## CRMKIT P 24VAC 4CO L

**Weidmüller Interface GmbH & Co. KG**  
 Klingenbergstraße 26  
 D-32758 Detmold  
 Germany

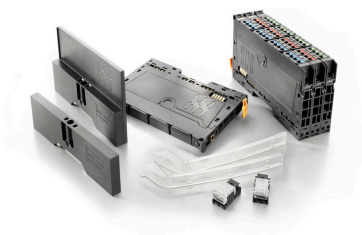
www.weidmueller.com

## Accessories

### General ordering data

|            |                            |   |
|------------|----------------------------|---|
| Type       | MF 10/8 MM WS              | Version   |
| Order No.  | <a href="#">2519190000</a> | Terminal marker, 10 x 8 mm, white                         |
| GTIN (EAN) | 4050118531411              |   |
| Qty.       | 400 ST                     |   |
| Type       | MF 10/5 MM WS              | Version   |
| Order No.  | <a href="#">2519170000</a> | Terminal marker, 10 x 5 mm, white                         |
| GTIN (EAN) | 4050118531190              |   |
| Qty.       | 600 ST                     |   |
| Type       | MF 10/6 MM WS              | Version   |
| Order No.  | <a href="#">2519180000</a> | Terminal marker, 10 x 6 mm, white                         |
| GTIN (EAN) | 4050118531404              |   |
| Qty.       | 500 ST                     |   |
| Type       | MF 10/16 MM WS             | Version   |
| Order No.  | <a href="#">2886020000</a> | Terminal marker, 10 x 16 mm, white                        |
| GTIN (EAN) | 4064675854623              |   |
| Qty.       | 150 ST                     |   |
| Type       | MF 10/7.6 MM WS            | Version   |
| Order No.  | <a href="#">2885990000</a> | Terminal marker, 10 x 7.6 mm, Pitch in mm (P): 7.60 white |
| GTIN (EAN) | 4064675854593              |   |
| Qty.       | 400 ST                     |   |
| Type       | MF 10/10 MM WS             | Version   |
| Order No.  | <a href="#">2886000000</a> | Terminal marker, 10 x 10 mm, white                        |
| GTIN (EAN) | 4064675854609              |   |
| Qty.       | 300 ST                     |   |
| Type       | MF 10/12 MM WS             | Version   |
| Order No.  | <a href="#">2886010000</a> | Terminal marker, 10 x 12 mm, white                        |
| GTIN (EAN) | 4064675854616              |   |
| Qty.       | 250 ST                     |   |

### Accessories



#### System accessory

Discover a wide range of accessories for your u-remote system - the ideal addition to make your applications even more efficient and flexible.

### General ordering data

|            |                            |                |
|------------|----------------------------|----------------|
| Type       | UR20-EBK-ACC               | Version        |
| Order No.  | <a href="#">1346610000</a> | End bracket, , |
| GTIN (EAN) | 4050118151596              |                |
| Qty.       | 5 ST                       |                |