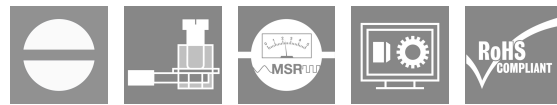
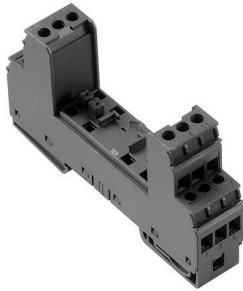


VSPC BASE 2/4CH R

Weidmüller Interface GmbH & Co. KG
Klingenbergstraße 26
D-32758 Detmold
Germany

www.weidmueller.com



Base element for the pluggable VSPC arrester, integrated PE foot in impedance-neutral VSPC BASE. Can safely discharge up to 20 kA (8/20 μ s) and 2.5 kA (10/350 μ s) to the PE.

General ordering data

| | |
|------------|--|
| Version | Surge protection, Flange-mounted housing, Flange-mounted housing |
| Order No. | 8951790000 |
| Type | VSPC BASE 2/4CH R |
| GTIN (EAN) | 4032248743032 |
| Qty. | 1 items |

VSPC BASE 2/4CH R

Weidmüller Interface GmbH & Co. KG
 Klingenbergstraße 26
 D-32758 Detmold
 Germany

www.weidmueller.com

Technical data

Approvals

Approvals



ROHS Conform

UL File Number Search [UL Website](#)

Certificate No. (UL) E311081

Dimensions and weights

| | | | |
|------------|---------|-----------------|-------------|
| Depth | 69 mm | Depth (inches) | 2.7165 inch |
| Height | 98 mm | Height (inches) | 3.8583 inch |
| Width | 17.8 mm | Width (inches) | 0.7008 inch |
| Net weight | 74 g | | |

Temperatures

| | | | |
|---------------------|----------------|-----------------------|----------------|
| Storage temperature | -40 °C...80 °C | Operating temperature | -40 °C...70 °C |
| Humidity | 5...96 % | | |

Environmental Product Compliance

| | |
|--------------------------------------|--------------------------------------|
| RoHS Compliance Status | Compliant with exemption |
| RoHS Exemption (if applicable/known) | 6c, 7cl |
| REACH SVHC | Lead 7439-92-1 |
| SCIP | 5047b468-d57a-4a1c-8363-2ff1629067e4 |

Rated data UL

| | | | |
|----------------------|---------|----------------|--|
| Certificate No. (UL) | E311081 | UL certificate | UL 497b Certificate - PDF/ E311081VOL1SEC2.pdf (application/pdf) |
|----------------------|---------|----------------|--|

Connection data, remote alert

| | | | |
|--|---------------------|--|---------------------|
| Cross-section for connected wire, solid core, min. | 0.5 mm ² | Stripping length | 6 mm |
| Connection type | Screw connection | Cross-section for connected wire, solid core, max. | 1.5 mm ² |
| Max. torque | 0.2 Nm | | |

CSA protection data

| | | | |
|------------------------------|--------|-----------------|-----|
| Gas group D | IIA | Gas groups A, B | IIC |
| Input-current, max. II | 300 mA | Gas group C | IIB |
| Internal inductance, max. LI | 0 µH | | |

General data

| | | | |
|---------------------------|------------------------|---------------|------------------------------------|
| Optical function display | No | Segment | Measurement - Monitoring - Setting |
| Version | Flange-mounted housing | Design | Terminal, miscellaneous |
| UL 94 flammability rating | V-0 | Colour | black |
| Protection degree | IP20 | Mounting rail | TS 35, TS 35 x 7.5 |

VSPC BASE 2/4CH R

Weidmüller Interface GmbH & Co. KG
 Klingenbergstraße 26
 D-32758 Detmold
 Germany

www.weidmueller.com

Technical data

Insulation coordination acc. to EN 50178

| | | | |
|------------------------|-----|--------------------|---|
| Surge voltage category | III | Pollution severity | 2 |
|------------------------|-----|--------------------|---|

Rated data IEC / EN

| | | | |
|--------------------|--|------------------------------|--|
| Signalling contact | UN 250 V AC 0.1 A 1CO at VSPC R with VSPC control unit | Rated current I _N | 10 A |
| Voltage type | AC/DC | Standards | IEC 61643-21, IEC 62305, DIN EN 60079-0:2009, DIN EN 60079-11:2007, DIN EN 60079-26:2007, DIN EN 61241-11:2006 |

Further details of approvals

| | |
|------------------|--|
| GOST certificate | GOST-Zertifikat - PDF/7950_n1-n4.pdf (application/pdf) |
|------------------|--|

Connection data

| | | | |
|---|---------------------|---|---------------------|
| Stripping length | 7 mm | Type of connection | Screw connection |
| Stripping length, rated connection | 7 mm | Tightening torque, min. | 0.5 Nm |
| Tightening torque, max. | 0.8 Nm | Clamping range, min. | 0.5 mm ² |
| Clamping range, max. | 4 mm ² | Wire cross-section, solid, min. | 0.5 mm ² |
| Wire cross-section, solid, max. | 4 mm ² | Wire connection cross section, finely stranded, max. | 2.5 mm ² |
| Conductor cross-section, flexible, AEH (DIN 46228-1), min. | 0.5 mm ² | Conductor cross-section, flexible, AEH (DIN 46228-1), max. | 2.5 mm ² |
| Connection cross-section, stranded, min. | 0.5 mm ² | Connection cross-section, stranded, max. | 2.5 mm ² |
| Blade size | 0.6 x 3.5 mm | | |

Electrical data

| | |
|--------------|-------|
| Voltage type | AC/DC |
|--------------|-------|

General data

| | | | |
|-------------------|------|--------|-------|
| Protection degree | IP20 | Colour | black |
|-------------------|------|--------|-------|

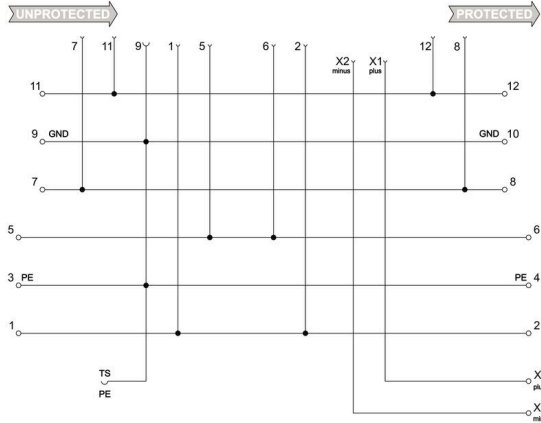
Ratings IECEx/ATEX/cUL

| | |
|-----------------|--|
| cUL certificate | cUL Certificate - pdf/ VSPC.PDF (application/ pdf) |
|-----------------|--|

Classifications

| | | | |
|-------------|-------------|-------------|-------------|
| ETIM 8.0 | EC000472 | ETIM 9.0 | EC000472 |
| ETIM 10.0 | EC000472 | ECLASS 14.0 | 27-17-15-91 |
| ECLASS 15.0 | 27-17-15-91 | | |

Electric symbol



Circuit diagram

| Cate- gory | Testing pulse | Surge voltage | Surge current | Pulse Type |
|------------|-------------------|---------------------------|----------------------------|---|
| C1 | Quick-rising edge | 0.5 - 2 kV with 1.2/50 µs | 0.25 - 1 kA mit 8/20 µs | 300 Surge voltage arrester |
| C2 | Quick-rising edge | 2 - 10 kV with 1.2/50 µs | 1 - 5 kA mit 8/20 µs | 10 Surge voltage arrester |
| C3 | Quick-rising edge | ≥ 1 kV with 1 kV/µs | 10 - 100 A mit 10/10000 µs | 300 Surge voltage arrester |
| D1 | High power | ≥ 1 kV | 0.5 - 2.5 kA mit 10/350 µs | 2 Arrester for lightning current and surge voltages |

Discharge capacity

VSPC BASE 2/4CH R

Weidmüller Interface GmbH & Co. KG
 Klingenbergstraße 26
 D-32758 Detmold
 Germany

www.weidmueller.com

Accessories

Supply and alert unit for VSPC R arresters



- Signalling module for all VSPCs with status indicator
- Signalling of cable breaks / signal interruptions
- Power supply of 20 to 31 V DC
- No-voltage changeover contact
- Function display with red/green LED
- Functional alerts with different signal types.

General ordering data

| | | | |
|------------|----------------------------|--|--|
| Type | VSPC CONTROL UNIT 24VDC | Version | |
| Order No. | 8972270000 | Surge protection for instrumentation and control, with warning function / function indicator | |
| GTIN (EAN) | 4032248793488 | | |
| Qty. | 1 ST | | |

Earthing module



- Can be applied to unassigned wires
- Can be used during initial commissioning and maintenance
- All sensor cables connected to the VSPC are earthed.
- Can be plugged into all VSPC base sockets

General ordering data

| | | | |
|------------|----------------------------|--|--|
| Type | VSPC GROUND | Version | |
| Order No. | 8924680000 | Adapter, without warning function / function indicator | |
| GTIN (EAN) | 4032248696321 | | |
| Qty. | 1 ST | | |

Slotted screwdriver



Slotted screwdriver with rounded blade SD DIN 5265, ISO 2380/2, output to DIN 5264, ISO 2380/1.
 ChromTop tip, SoftFinish grip

General ordering data

| | | | |
|------------|----------------------------|--------------------------|--|
| Type | SDS 0.6X3.5X200 | Version | |
| Order No. | 9010110000 | Screwdriver, Screwdriver | |
| GTIN (EAN) | 4032248300754 | | |
| Qty. | 1 ST | | |

VSPC BASE 2/4CH R

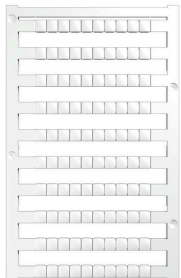
Weidmüller Interface GmbH & Co. KG
Klingenbergstraße 26
D-32758 Detmold
Germany

www.weidmueller.com

Accessories

| | | | |
|------------|----------------------------|--------------------------|--|
| Type | SDS 0.4X2.0X60 | Version | |
| Order No. | 9037160000 | Screwdriver, Screwdriver | |
| GTIN (EAN) | 4032248171613 | | |
| Qty. | 1 ST | | |

Plus



The Dekafix (DEK) marker is the universal marker for all conductor and plug-in connectors as well as for electronic sub-assemblies. The system is ideal for short number sequences and covers a wide range of ready-printed markers.

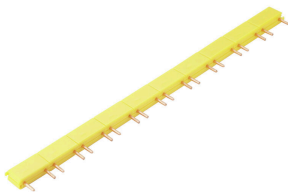
Strips for fast installation in only one work step. The printing is easy to read, rich in contrast and available in various widths.

- Large range of ready-to-use markers
 - Strips for fast installation
 - Terminal markers, suitable for all Weidmüller cable connectors
 - Available as blank MultiCard or with standard printing
- For custom printing: Please send us a file of our labeling software M-Print PRO or M-Print PRO Online (without installation) for your labeling specifications.

General ordering data

| | | | |
|------------|----------------------------|---|--|
| Type | DEK 5/5 PLUS MC NE WS | Version | |
| Order No. | 1854490000 | Dekafix, Terminal marker, 5 x 5 mm, Pitch in mm (P): 5.00 | |
| GTIN (EAN) | 4032248393596 | Weidmueller, white | |
| Qty. | 1000 ST | | |

Cross-connections



Cross-connection between the VSPC signal contacts can be installed quickly. Cross-connections can be individually separated for the alert function with maximum 10 VSPC R.

General ordering data

| | | | |
|------------|----------------------------|---------|--|
| Type | QB 17,8/2 | Version | |
| Order No. | 1309470000 | | |
| GTIN (EAN) | 4050118111934 | | |
| Qty. | 90 ST | | |