

KWPN-M10/-16 90**Weidmüller Interface GmbH & Co. KG**

Klingenbergstraße 26

D-32758 Detmold

Germany

www.weidmueller.com



The use of insulated connectors guarantees users consistent electrical connection quality in the long term.

- Wide range of insulated and non-insulated cable lugs and connectors
- Tubular cable lugs according to current market standards (Euroseries)
- Compression cable lugs acc. to DIN 46235
- Sheet metal cable lugs acc. to DIN 46234
- Insulated ring cable lugs to DIN 46237
- Insulated pin cable lugs to DIN 46231

General ordering data

| | |
|------------|---|
| Version | cable lug, terminal end, 16 mm ² |
| Order No. | 1497470000 |
| Type | KWPN-M10/-16 90 |
| GTIN (EAN) | 4050118307016 |
| Qty. | 100 items |

KWPN-M10/-16 90

Weidmüller Interface GmbH & Co. KG
 Klingenbergstraße 26
 D-32758 Detmold
 Germany

www.weidmueller.com

Technical data

Approvals

| | |
|------|---------|
| ROHS | Conform |
|------|---------|

Dimensions and weights

| | |
|------------|---------|
| Net weight | 14.08 g |
|------------|---------|

Environmental Product Compliance

| | |
|------------------------|-----------------------------|
| RoHS Compliance Status | Compliant without exemption |
| REACH SVHC | No SVHC above 0.1 wt% |

Technical data

| | |
|---------|-----------------------|
| Version | DIN series 46235, 90° |
|---------|-----------------------|

Connectors

| | | | |
|--------------------------------|--------------------|--------------------------------|---------------|
| Conductor cross-section | 16 mm ² | Insulation | not available |
| Hole | M10 | Inside diameter of shaft (d1) | 5.5 mm |
| Outside diameter of shaft (d3) | 8.5 mm | Shaft length (a) | 20 mm |
| Connection length (l) | 18.3 mm | Inside diameter of flange (d2) | 10.5 mm |
| Flange width (b) | 16.5 mm | Identification number Cu | 8 K |

Classifications

| | | | |
|-------------|-------------|-------------|-------------|
| ETIM 8.0 | EC001050 | ETIM 9.0 | EC001050 |
| ETIM 10.0 | EC001050 | ECLASS 14.0 | 27-40-02-03 |
| ECLASS 15.0 | 27-40-02-03 | | |

KWPN-M10/-16 90

Weidmüller Interface GmbH & Co. KG
Klingenbergstraße 26
D-32758 Detmold
Germany

Drawings

www.weidmueller.com



KWPN-M10/-16 90

Weidmüller Interface GmbH & Co. KG
 Klingenbergstraße 26
 D-32758 Detmold
 Germany

www.weidmueller.com

Accessories

Crimping tools



Crimping tools for non-insulated connectors
 Rolled cable lugs, tubular cable lugs, terminal pins,
 parallel and serial connectors

- Ratchet guarantees precise crimping
- Release option in the event of incorrect operation

General ordering data

| | | | |
|------------|----------------------------|--|--|
| Type | CTN 25 D5 | Version | |
| Order No. | 9006230000 | Pressing tool, Crimping tool for contacts, 10mm ² , 25mm ² , Hexagonal | |
| GTIN (EAN) | 4008190198459 | crimp | |
| Qty. | 1 ST | | |

Crimping tool for tubular (EN 13600) and compression cable lugs (DIN 46235)



Crimping tools for tubular and compression cable lugs
 with swivel crimping star.

- Integrated crimping star for different cross-sections
- Hexagon crimping tools for compression cable lugs
- WM-From crimping tools for tubular cable lugs
- wide processing range up to 70 or 120 mm²

General ordering data

| | | | |
|------------|----------------------------|--|--|
| Type | PZ PK 6/70 | Version | |
| Order No. | 1500470000 | 6mm ² , 70mm ² , Hexagonal crimp | |
| GTIN (EAN) | 4050118309263 | | |
| Qty. | 1 ST | | |
| Type | PZ PK 10/120 | Version | |
| Order No. | 1500480000 | 10mm ² , 120mm ² , Hexagonal crimp | |
| GTIN (EAN) | 4050118309089 | | |
| Qty. | 1 ST | | |

KWPN-M10/-16 90

Weidmüller Interface GmbH & Co. KG

Klingenbergstraße 26

D-32758 Detmold

Germany

www.weidmueller.com

Accessories

Tools



Crimping tools for cable lugs, connectors and wire-end ferrules with interchangeable inserts

- extremely fast processing thanks to hydraulic support
- large processing range up to 300 mm²
- 270° revolving quick-action crimping head
- automatic pressure limitation and monitoring via pressure sensor
- electronic control and monitoring of the crimping process
- Saving of all crimping cycles and error messages to internal memory
- Reading of all cycles and error messages via USB
- Li-ion rechargeable battery with charge status indicator: 18 V, 2 Ah

General ordering data

| | | |
|------------|----------------------------|--|
| Type | EPG 45 | Version |
| Order No. | 1500830000 | Pressing tool, 6mm ² , 150mm ² , Hexagonal crimp, WM crimp, Indent |
| GTIN (EAN) | 4050118309317 | crimp, Trapezoidal crimp, Oval crimping |
| Qty. | 1 ST | |

... for tubular cable lugs (acc. to EN 13600)



Crimping tools for cable lugs, connectors and wire-end ferrules with interchangeable inserts

- extremely fast processing thanks to hydraulic support
- large processing range up to 300 mm²
- 270° revolving quick-action crimping head
- automatic pressure limitation and monitoring via pressure sensor
- electronic control and monitoring of the crimping process
- Saving of all crimping cycles and error messages to internal memory
- Reading of all cycles and error messages via USB
- Li-ion rechargeable battery with charge status indicator: 18 V, 2 Ah

General ordering data

| | | |
|------------|----------------------------|------------------------------|
| Type | ES EPG 45 WM 16/35 | Version |
| Order No. | 1500920000 | 35mm ² , WM crimp |
| GTIN (EAN) | 4050118309478 | |
| Qty. | 1 ST | |

KWPN-M10/-16 90

Weidmüller Interface GmbH & Co. KG

Klingenbergstraße 26

D-32758 Detmold

Germany

www.weidmueller.com

Accessories

... for compression cable lugs (acc. to DIN 46235)



Crimping tools for cable lugs, connectors and wire-end ferrules with interchangeable inserts

- extremely fast processing thanks to hydraulic support
- large processing range up to 300 mm²
- 270° revolving quick-action crimping head
- automatic pressure limitation and monitoring via pressure sensor
- electronic control and monitoring of the crimping process
- Saving of all crimping cycles and error messages to internal memory
- Reading of all cycles and error messages via USB
- Li-ion rechargeable battery with charge status indicator: 18 V, 2 Ah

General ordering data

| | | | |
|------------|----------------------------|---------|-------------------------------------|
| Type | ES EPG 45 HEX 16/35 | Version | |
| Order No. | 1500950000 | Version | 35mm ² , Hexagonal crimp |
| GTIN (EAN) | 4050118309492 | | |
| Qty. | 1 ST | | |

Tools



Crimping tools for cable lugs, connectors and wire-end ferrules with interchangeable inserts

- extremely fast processing thanks to hydraulic support
- large processing range up to 300 mm²
- 270° revolving quick-action crimping head
- automatic pressure limitation and monitoring via pressure sensor
- electronic control and monitoring of the crimping process
- Saving of all crimping cycles and error messages to internal memory
- Reading of all cycles and error messages via USB
- Li-ion rechargeable battery with charge status indicator: 18 V, 2 Ah

General ordering data

| | | | |
|------------|----------------------------|---------|---|
| Type | EPG 60 | Version | |
| Order No. | 2453810000 | Version | Pressing tools, Tools, Pressing tool, 6mm ² , 300mm ² , Hexagonal crimp, WM crimp, Indent crimp, Trapezoidal crimp, Oval crimping |
| GTIN (EAN) | 4050118468434 | | |
| Qty. | 1 ST | | |

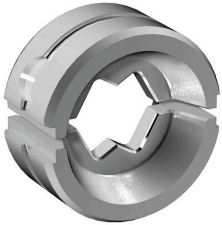
KWPN-M10/-16 90

Weidmüller Interface GmbH & Co. KG
 Klingenbergstraße 26
 D-32758 Detmold
 Germany

www.weidmueller.com

Accessories

... for tubular cable lugs



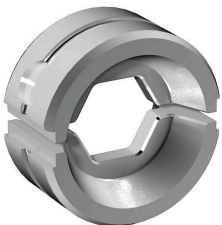
Crimping tools for cable lugs, connectors and wire-end ferrules with interchangeable inserts

- extremely fast processing thanks to hydraulic support
- large processing range up to 300 mm²
- 270° revolving quick-action crimping head
- automatic pressure limitation and monitoring via pressure sensor
- electronic control and monitoring of the crimping process
- Saving of all crimping cycles and error messages to internal memory
- Reading of all cycles and error messages via USB
- Li-ion rechargeable battery with charge status indicator: 18 V, 2 Ah

General ordering data

| | | |
|------------|----------------------------|--|
| Type | ES EPG/HPG 60 WM 16 | Version |
| Order No. | 2469550000 | Crimping tool insert, 16mm ² , WM crimp |
| GTIN (EAN) | 4050118483833 | |
| Qty. | 1 ST | |

... for compression cable lugs



Crimping tools for cable lugs, connectors and wire-end ferrules with interchangeable inserts

- extremely fast processing thanks to hydraulic support
- large processing range up to 300 mm²
- 270° revolving quick-action crimping head
- automatic pressure limitation and monitoring via pressure sensor
- electronic control and monitoring of the crimping process
- Saving of all crimping cycles and error messages to internal memory
- Reading of all cycles and error messages via USB
- Li-ion rechargeable battery with charge status indicator: 18 V, 2 Ah

General ordering data

| | | |
|------------|----------------------------|---|
| Type | ES EPG/HPG 60 HEX 16 | Version |
| Order No. | 2505170000 | Crimping tool insert, 16mm ² , Hexagonal crimp |
| GTIN (EAN) | 4050118519549 | |
| Qty. | 1 ST | |

KWPN-M10/-16 90

Weidmüller Interface GmbH & Co. KG
 Klingenbergstraße 26
 D-32758 Detmold
 Germany

www.weidmueller.com

Accessories

Tools



Crimping tools for cable lugs, connectors and wire-end ferrules with interchangeable inserts

- extremely fast processing thanks to hydraulic support
- large processing range up to 400 mm²
- 360° revolving quick action crimping head
- automatic pressure limitation and monitoring via pressure sensor
- Additional features for APG series:
- electronic control and monitoring of the crimping process
- Saving of all crimping cycles and error messages to internal memory
- Reading of all cycles and error messages via USB

General ordering data

| | | |
|------------|----------------------------|--|
| Type | HPG 60 | Version |
| Order No. | 2453820000 | 6mm ² , 300mm ² , Hexagonal crimp, WM crimp, Indent crimp, |
| GTIN (EAN) | 4050118468427 | Trapezoidal crimp, Oval crimping |
| Qty. | 1 ST | |

... for tubular cable lugs (acc. to EN 13600)



Crimping tools for cable lugs, connectors and wire-end ferrules with interchangeable inserts

- extremely fast processing thanks to hydraulic support
- large processing range up to 400 mm²
- 360° revolving quick action crimping head
- automatic pressure limitation and monitoring via pressure sensor
- Additional features for APG series:
- electronic control and monitoring of the crimping process
- Saving of all crimping cycles and error messages to internal memory
- Reading of all cycles and error messages via USB

General ordering data

| | | |
|------------|----------------------------|------------------------------|
| Type | ES APG 80 WM 16 | Version |
| Order No. | 1502470000 | 16mm ² , WM crimp |
| GTIN (EAN) | 4050118310498 | |
| Qty. | 1 ST | |

KWPN-M10/-16 90

Weidmüller Interface GmbH & Co. KG

Klingenbergstraße 26

D-32758 Detmold

Germany

www.weidmueller.com

Accessories

... for compression cable lugs (acc. to DIN 46235)



Crimping tools for cable lugs, connectors and wire-end ferrules with interchangeable inserts

- extremely fast processing thanks to hydraulic support
- large processing range up to 400 mm²
- 360° revolving quick action crimping head
- automatic pressure limitation and monitoring via pressure sensor
- Additional features for APG series:
- electronic control and monitoring of the crimping process
- Saving of all crimping cycles and error messages to internal memory
- Reading of all cycles and error messages via USB

General ordering data

| | | | |
|------------|----------------------------|---------|-------------------------------------|
| Type | ES APG 80 HEX 16 | Version | |
| Order No. | 1502630000 | | 16mm ² , Hexagonal crimp |
| GTIN (EAN) | 4050118310436 | | |
| Qty. | 1 ST | | |