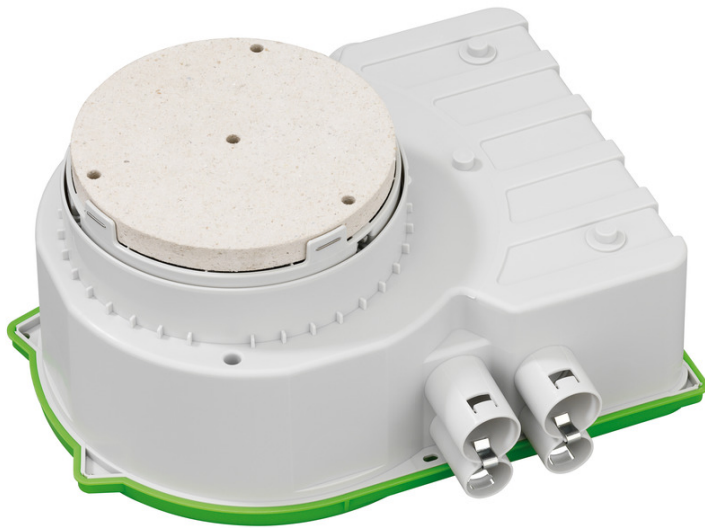


Enclosure

IBTronic XL Drillbox 150



IBTronic XL Drillbox 150

Enclosure

Productnumber: 97680401

Dimensions: 255 x 280 x 92 mm

Enclosure, for prefabricated construction, for installing LV/HV/LED luminaires, suitable for subsequent installation in prefabricated ceilings 45-70 mm with \varnothing 152 mm core drilling, for the installation of VDE-approved lights per DIN EN 60598 (VDE 0711), as well as with F identification or MM identification, max. installation height LV lights: 105 mm, HV lights: 110 mm, lamp output max. 50W Alu, with additional connection space, (e.g. for installing an electronic safety transformer up to max. 150 VA), rated insulation voltage: 400V AC, Halogen free

Selectable outlet aperture: Fermacell® plasterboard, variable to \varnothing 100 mm, 8 combi-conduit entries 4 x M20, 4 x M25, integrated conduit stopper and strain relief for conduits M20, M25, dowel installation at floor slab, integrated conduit adapter, sealing range M20 - M25



Technical Data

electrical characteristics

Rated insulation voltage AC: 400 V

Suitable for: Concrete construction

Colours

Cover colour: other

Dimensions

Width: 255 mm

Length: 280 mm

Height: 92 mm

Weight: 0.7509 kg

Material characteristics

Halogen free: yes

Flammability class according with UL94: HB

Glow-wire flammability: 650 °C (EN 60695-2-11)

mechanical properties

Type of fastening: dowel installation at floor slab

Ambient conditions

max. relative humidity 25°C: - %

max. relative humidity 40°C: 50 %

Min. ambient temperature: -25 °C

Max. ambient temperature: 40 °C

24h ambient temperature: 35 °C

Sales Information

EAN: 4013902845248

ETIM Class: EC000414

Sales Information

Custom tariff number: 39269097

Minimum order quantity: 1

Material

Base unit material: Polypropylene

Cover material: Polypropylene

Accessories

[92513501 - HW LFR-35 - HW hole cutter](#)