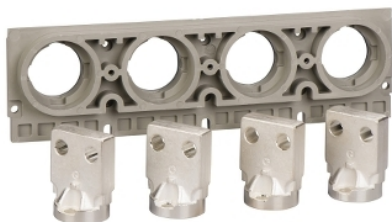


Product data sheet

Characteristics

33605

Vertical rear connection, MasterPact NT06/NT16, ComPacT NS630b/NS1600, 3 poles, fixed, 630A/1600A, bottom mounting



Main

Range of product	MasterPact NT ComPacT NS630b...1600 new generation
Product or component type	Rear connection
Accessory / separate part category	Connection accessory
Range compatibility	Masterpact MasterPact NT ComPacT ComPacT NS630b...1600
Poles description	3P
Mounting mode	Fixed
[In] rated current	630...1600 A

Complementary

Location of connection	Rear
Localisation on device	Bottom
Connection position	Vertical
Connection pitch	70 mm

Packing Units

Unit Type of Package 1	PCE
Number of Units in Package 1	1
Package 1 Height	3.0 cm
Package 1 Width	8.0 cm
Package 1 Length	20.0 cm
Package 1 Weight	2.264 kg

Offer Sustainability

REACH Regulation	REACH Declaration
REACH free of SVHC	Yes
EU RoHS Directive	Compliant EU RoHS Declaration
Toxic heavy metal free	Yes
Mercury free	Yes
China RoHS Regulation	China RoHS Declaration
RoHS exemption information	Yes
WEEE	The product must be disposed on European Union markets following specific waste collection and never end up in rubbish bins

Contractual warranty

Warranty	18 months
----------	-----------