

HDC 06B SDLU 2PG16G

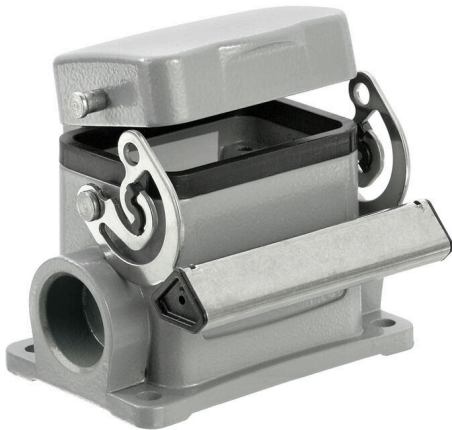
Weidmüller Interface GmbH & Co. KG

Klingenbergstraße 26

D-32758 Detmold

Germany

www.weidmueller.com



The special die-cast alloy and the multi-layered surface sealing provide complete protection for the HDC housings.

The cleverly designed interlock system is manufactured from stainless steel. This guarantees a long lifespan with high resistance to corrosion and impact.

The housing interlock system provides integrated safety. Our unique, patented spring system provides the housing interlock with a secure grip and prevents accidental opening.

The laser marking allows for easy and quick identification. Each housing is permanently labelled with a laser marking so that each product can be quickly designated and positioned.

Weidmüller RockStar® IP 65 / NEMA Type 4X housings - your first choice for industrial housings with IP 65 protection.

General ordering data

| | |
|------------|--|
| Version | HDC enclosures, Installation size: 3, Protection degree: IP65, in plugged condition, Base housing, End-locking clamp, lower side, Standard, with cover, Size of cable entries: PG 16 |
| Order No. | 1652990000 |
| Type | HDC 06B SDLU 2PG16G |
| GTIN (EAN) | 4008190403065 |
| Qty. | 1 items |

HDC 06B SDLU 2PG16G

Weidmüller Interface GmbH & Co. KG
 Klingenbergstraße 26
 D-32758 Detmold
 Germany

www.weidmueller.com

Technical data

Approvals

Approvals



| | |
|-------------------------|----------------------------|
| ROHS | Conform |
| UL File Number Search | UL Website |
| Certificate No. (cURus) | E92202 |

Dimensions and weights

| | | | |
|-----------------------------|---------|----------------------------|-------------|
| Height | 72 mm | Height (inches) | 2.8346 inch |
| Width | 92.5 mm | Width (inches) | 3.6417 inch |
| Mounting dimension - height | 40 mm | Mounting dimension - width | 70 mm |
| Net weight | 285 g | | |

Temperatures

| | |
|-------------------|-------------------|
| Limit temperature | -40 °C ... 125 °C |
|-------------------|-------------------|

Environmental Product Compliance

| | |
|------------------------|--|
| RoHS Compliance Status | Compliant without exemption |
| REACH SVHC | Potassium perfluorobutane sulfonate 29420-49-3 |
| SCIP | e98b2b24-ba23-41bf-8d19-0dda3647412f |

| | | |
|---------------------|---------------------|-------------------------|
| Chemical resistance | Substance | Acetone |
| | Chemical resistance | Conditionally resistant |
| | Substance | Drilling oil |
| | Chemical resistance | Resistant |
| | Substance | Diesel |
| | Chemical resistance | Resistant |
| | Substance | Ethyl alcohol |
| | Chemical resistance | Resistant |
| | Substance | Transmission oil |
| | Chemical resistance | Resistant |
| | Substance | Hydraulic oil |
| | Chemical resistance | Resistant |
| | Substance | Coolant |
| | Chemical resistance | Resistant |
| | Substance | Petroleum benzene |
| | Chemical resistance | Resistant |
| | Substance | Sweat |
| | Chemical resistance | Resistant |
| | Substance | Premium gasoline |
| | Chemical resistance | Conditionally resistant |
| Substance | Water | |
| Chemical resistance | Resistant | |
| Substance | UV | |
| Chemical resistance | Unstable | |
| Substance | Ozone | |
| Chemical resistance | Unstable | |

Dimensions

| | | | |
|----------------------|-------|---------------|-----------|
| Hole pitch length A2 | 70 mm | Cable entry | w. thread |
| Width housing C | 43 mm | Width base C1 | 54.5 mm |

HDC 06B SDLU 2PG16G

Weidmüller Interface GmbH & Co. KG
 Klingenbergstraße 26
 D-32758 Detmold
 Germany

www.weidmueller.com

Technical data

| | | | |
|----------------------|-------|---------------------|-------|
| Total length housing | 60 mm | Height of housing B | 54 mm |
| Height of base B1 | 5 mm | | |

General data

| | | | |
|----------------|----------------|-------------------|----------------------------|
| Surface finish | Powder coating | Protection degree | IP65, in plugged condition |
|----------------|----------------|-------------------|----------------------------|

Version

| | | | |
|------------------------------|-------------------------------|--------------------------------|-------------------|
| Size of cable entries | PG 16 | Top part/bottom part/lid | lower part |
| Cover | with cover | Tightening torque | 1.2 Nm |
| Number of cable entry on top | 0 | Number of cable entry sideways | 2 |
| Design of cover | with cover | Design of housing | Base housing |
| Design of locking system | End-locking clamp, lower side | Design | Standard |
| Installation size | 3 | Cable entry | w. thread |
| Type | Base housing | Clamp version | End-locking clamp |
| Sealing | NBR | Internal thread | PG 16 |
| Colour (RAL) | RAL 7035 | BG | 3 |
| Suitable for ModuPlug® | No | | |

Classifications

| | | | |
|-------------|-------------|-------------|-------------|
| ETIM 8.0 | EC000437 | ETIM 9.0 | EC000437 |
| ETIM 10.0 | EC000437 | ECLASS 14.0 | 27-44-02-02 |
| ECLASS 15.0 | 27-44-02-02 | | |

