

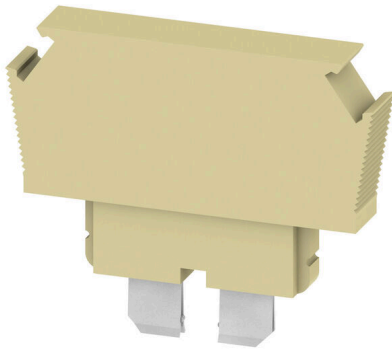
**DLS 2 SAKRD +/-****Weidmüller Interface GmbH & Co. KG**

Klingenbergstraße 26

D-32758 Detmold

Germany

www.weidmueller.com



The component plug is used to integrate an electrical component in a disconnect terminal block. After soldering the electronic component, the plug can be integrated into the disconnection area of our disconnect terminal blocks and thus changes the disconnect terminal block into a modular terminal block with integrated electronic component.

**General ordering data**

Version	Plug (terminal), 1 A, 250 V, Number of connections: 1, Number of poles: 1, Width: 5.8 mm
Order No.	<a href="#">0547760000</a>
Type	DLS 2 SAKRD +/-
GTIN (EAN)	4008190177249
Qty.	50 items
Delivery status	This article will no longer be available in the future.
Available until	2026-06-30T00:00:00+02:00

## DLS 2 SAKRD +/-

Weidmüller Interface GmbH & Co. KG  
Klingenbergstraße 26  
D-32758 Detmold  
Germany

www.weidmueller.com

## Technical data

## Approvals

ROHS	Conform
------	---------

## Dimensions and weights

Height	36 mm	Height (inches)	1.4173 inch
Width	5.8 mm	Width (inches)	0.2283 inch
Net weight	3.82 g		

## Temperatures

Ambient temperature	-5 °C...40 °C	Continuous operating temp., min.	-50 °C
Continuous operating temp., max.	100 °C		

## Environmental Product Compliance

RoHS Compliance Status	Compliant with exemption
RoHS Exemption (if applicable/known)	7a
REACH SVHC	Lead 7439-92-1
SCIP	e1c310ef-6b67-4efa-80a6-d307472f4de9

## Material data

Basic material	Polyamide 66	Colour	beige
UL 94 flammability rating	V-2		

## System specifications

Version	Plug
---------	------

## Additional technical data

Type of fixing	Plugged	Installation advice	Direct mounting
Explosion-tested version	No	Type of mounting	Plugged

## Conductors for clamping (rated connection)

Number of connections	1
-----------------------	---

## Dimensions

Pitch in mm (P)	6.00 mm
-----------------	---------

## General

Number of poles	1	Installation advice	Direct mounting
Operating temperature range, max.	100 °C		

## Rating data

Rated voltage	250 V	Nominal current	1 A
---------------	-------	-----------------	-----

## Classifications

ETIM 8.0	EC002848	ETIM 9.0	EC002848
ETIM 10.0	EC002848	ECLASS 14.0	27-25-03-90

**Technical data**

---

ECLASS 15.0

27-25-03-90

---

**Drawings**

