

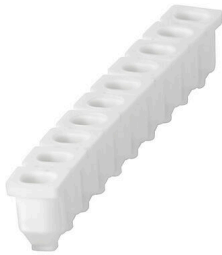
**ZRH 1.5H/1****Weidmüller Interface GmbH & Co. KG**

Klingenbergstraße 26

D-32758 Detmold

Germany

www.weidmueller.com

**Product image**

The use of reducing sleeves simplifies the connection of conductors with smaller cross-sections. Conductors can be reliably inserted into the clamping point without the strands fraying. The use of a reducing sleeve centres the conductor in the entry point.

**General ordering data**

Version	Z-series, Reducing sleeve
Order No.	<a href="#">1678810000</a>
Type	ZRH 1.5H/1
GTIN (EAN)	4008190487324
Qty.	1000 items

## ZRH 1.5H/1

**Weidmüller Interface GmbH & Co. KG**  
 Klingenbergstraße 26  
 D-32758 Detmold  
 Germany

www.weidmueller.com

## Technical data

### Approvals

ROHS	Conform
------	---------

### Dimensions and weights

Depth	7.45 mm	Depth (inches)	0.2933 inch
Height	49.3 mm	Height (inches)	1.9409 inch
Width	4.85 mm	Width (inches)	0.1909 inch
Net weight	0.07 g		

### Temperatures

Storage temperature	-25 °C...55 °C	Ambient temperature	-50 °C...75 °C
Continuous operating temp., min.	-50 °C	Continuous operating temp., max.	120 °C

### Environmental Product Compliance

RoHS Compliance Status	Compliant without exemption
REACH SVHC	No SVHC above 0.1 wt%

### Material data

Basic material	Wemid	Colour	grey
UL 94 flammability rating	V-0		

### System specifications

Version	For the terminals
---------	-------------------

### Additional technical data

Type of fixing	Plugged	Installation advice	Direct mounting
Explosion-tested version	No		

### General

Installation advice	Direct mounting
---------------------	-----------------

### Classifications

ETIM 8.0	EC002848	ETIM 9.0	EC002848
ETIM 10.0	EC002848	ECLASS 14.0	27-25-03-90
ECLASS 15.0	27-25-03-90		