

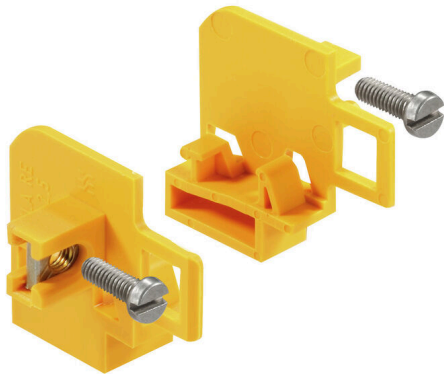
ZVLA DF ZPS2.5**Weidmüller Interface GmbH & Co. KG**

Klingenbergstraße 26

D-32758 Detmold

Germany

www.weidmueller.com

Product image

The plugs for our WeiCoS-System are available for all different connection systems. The product range includes preassembled connectors from 1 to 10 poles and the possibility of an individual assembly. This ensures maximum flexibility for every application. The customized accessories increase the safety and protection against environmental influences.

General ordering data

Version	Z-series, Plug-in modular terminals, yellow
Order No.	1878600000
Type	ZVLA DF ZPS2.5
GTIN (EAN)	4032248471577
Qty.	20 items

ZVLA DF ZPS2.5

Weidmüller Interface GmbH & Co. KG
Klingenbergstraße 26
D-32758 Detmold
Germany

www.weidmueller.com

Technical data

Approvals

ROHS	Conform
------	---------

Dimensions and weights

Depth	27 mm	Depth (inches)	1.063 inch
Height	80 mm	Height (inches)	3.1496 inch
Net weight	6.34 g		

Temperatures

Storage temperature	-25 °C...55 °C	Ambient temperature	-50 °C...55 °C
Continuous operating temp., min.	-50 °C	Continuous operating temp., max.	100 °C

Environmental Product Compliance

RoHS Compliance Status	Compliant without exemption
REACH SVHC	No SVHC above 0.1 wt%

Material data

Basic material	PA 66 GF 30	Colour	yellow
UL 94 flammability rating	HB		

System specifications

Version	Intermediate part
---------	-------------------

Additional technical data

Installation advice	Direct mounting
---------------------	-----------------

Conductors for clamping (rated connection)

Type of connection	Plug-in connection	Number of connections	2
--------------------	--------------------	-----------------------	---

General

Number of poles	1	Installation advice	Direct mounting
-----------------	---	---------------------	-----------------

Rating data

Rated cross-section	2.5 mm ²
---------------------	---------------------

Classifications

ETIM 8.0	EC002848	ETIM 9.0	EC002848
ETIM 10.0	EC002848	ECLASS 14.0	27-25-03-90
ECLASS 15.0	27-25-03-90		