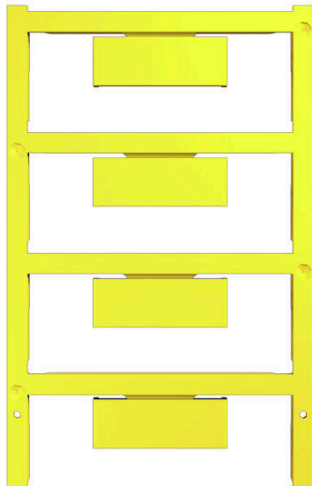


**WAD 12N MC NE GE****Weidmüller Interface GmbH & Co. KG**

Klingenbergstraße 26

D-32758 Detmold

Germany

[www.weidmueller.com](http://www.weidmueller.com)

The WAD connector marker is suitable for W-series terminals and for the WEW 35/2 and ZEW 35/2 end brackets. The markers are available as blank markers, with custom printing or standard print with lightning symbol. The WAD MultiCard markers are suitable for labelling with PrintJet CONNECT printers. For custom printing: Please send us a file of our labeling software M-Print PRO or M-Print PRO Online (without installation) for your labeling specifications.

**General ordering data**

Version	Group markers, Cover, 33.3 x 12 mm, WDU 16N, yellow
Order No.	<a href="#">2866650000</a>
Type	WAD 12N MC NE GE
GTIN (EAN)	4064675604860
Qty.	32 items

**WAD 12N MC NE GE**

**Weidmüller Interface GmbH & Co. KG**  
 Klingenbergstraße 26  
 D-32758 Detmold  
 Germany

www.weidmueller.com

**Technical data**

**Approvals**

ROHS Conform

**Dimensions and weights**

Height	33.3 mm	Height (inches)	1.311 inch
Width	12 mm	Width (inches)	0.4724 inch
Net weight	1.24 g		

**Temperatures**

Operating temperature range -40...100 °C

**Environmental Product Compliance**

RoHS Compliance Status	Compliant without exemption		
REACH SVHC	No SVHC above 0.1 wt%		
Product Carbon Footprint	Cradle to gate	0.460 kg CO2 eq.	

**General data**

Orientation of print	horizontal and vertical		
Width	12 mm		
UL 94 flammability rating	V-2		
Operating temperature range, max.	100 °C		
Operating temperature range, min.	-40 °C		
Colour	yellow		
Halogen	No		
Basic material	Polyamide 66		
Printed characters	neutral		
Number of markers per packaging unit	Form of supply	MultiCard	
Number of markers per combination	1 MultiCard = Cover		
Operating temperature range	-40...100 °C		
Application/manufacturer	WDU 16N		

**Classifications**

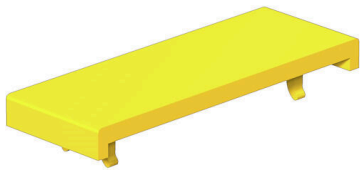
ETIM 8.0	EC000761	ETIM 9.0	EC000761
ETIM 10.0	EC000761	ECLASS 14.0	27-28-11-01
ECLASS 15.0	27-28-11-01		

**WAD 12N MC NE GE**

**Weidmüller Interface GmbH & Co. KG**  
Klingenbergstraße 26  
D-32758 Detmold  
Germany

[www.weidmueller.com](http://www.weidmueller.com)

**Drawings**



**Drawing**