

## HDC C HX BM6.0AG

**Weidmüller Interface GmbH & Co. KG**  
Klingenbergstraße 26  
D-32758 Detmold  
Germany

[www.weidmueller.com](http://www.weidmueller.com)



Crimps provide a electrical and mechanical connection between wire and contact that is both secure and reliable. The optimal crimp connection is gas-tight and corrosion-resistant.

### General ordering data

Version	Heavy-duty connectors, Crimp contact, MixMate, Female, Conductor cross-section, max.: 6, turned, Copper alloy
Order No.	<a href="#">1002980000</a>
Type	HDC C HX BM6.0AG
GTIN (EAN)	4032248697267
Qty.	25 items

**HDC C HX BM6.0AG**

**Weidmüller Interface GmbH & Co. KG**  
 Klingenbergstraße 26  
 D-32758 Detmold  
 Germany

www.weidmueller.com

**Technical data**

**Approvals**

Approvals



ROHS Conform

**Dimensions and weights**

Diameter 6 mm Net weight 2.78 g

**Environmental Product Compliance**

RoHS Compliance Status Compliant with exemption  
 RoHS Exemption (if applicable/known) 6c  
 REACH SVHC Lead 7439-92-1  
 SCIP 6eabd5ae-2d6b-409e-8bdf-87c27ee10e40

**General data**

Contact diameter, male Ø	4 mm	Stripping length, rated connection	8 mm
Type of connection	Crimp connection	Version insert	MixMate
Volume resistance	≤1 mΩ	Conductor cross-section, max.	6 mm <sup>2</sup>
Conductor cross-section, min.	6 mm <sup>2</sup>	Surface finish	silver
Plugging cycles	≥ 500	Type	Female
Basic material	Copper alloy	Production methods	turned
Cross-section for connected wire	6 - 6 mm <sup>2</sup>	Material of contact	Copper alloy

**Classifications**

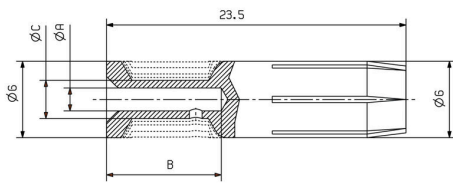
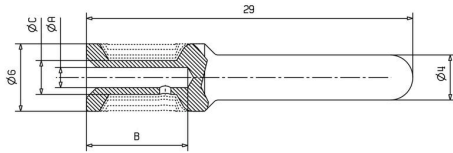
ETIM 8.0	EC000796	ETIM 9.0	EC000796
ETIM 10.0	EC000796	ECLASS 14.0	27-44-02-04
ECLASS 15.0	27-44-02-04		

**HDC C HX BM6.0AG**

**Weidmüller Interface GmbH & Co. KG**  
Klingenbergstraße 26  
D-32758 Detmold  
Germany

**Drawings**

[www.weidmueller.com](http://www.weidmueller.com)



## HDC C HX BM6.0AG

**Weidmüller Interface GmbH & Co. KG**  
 Klingenbergstraße 26  
 D-32758 Detmold  
 Germany

[www.weidmueller.com](http://www.weidmueller.com)

## Accessories

### Crimping tools



Crimping tools for turned contacts

- Ratchet guarantees precise crimping
- Release option in the event of incorrect operation
- With stop for exact positioning of the contacts.

### General ordering data

Type	CTIN CM 1.6/2.5	Version	
Order No.	<a href="#">9205430000</a>	Pressing tool, Crimping tool for contacts, 0.14mm <sup>2</sup> , 6mm <sup>2</sup> , 4-indent crimp	
GTIN (EAN)	4032248733446		
Qty.	1 ST		
Type	CTIN CM 3.6	Version	
Order No.	<a href="#">9205440000</a>	Crimping tool for contacts, 1.5mm <sup>2</sup> , 10mm <sup>2</sup> , 4-indent crimp	
GTIN (EAN)	4032248734146		
Qty.	1 ST		

### Contact removal tools



Weidmüller offers a variety of crimping tools, contact removal tools, and fibre optic tools.

### General ordering data

Type	REMOVAL TOOL HX	Version	
Order No.	<a href="#">1002990000</a>		
GTIN (EAN)	4032248697274		
Qty.	1 ST		

### 2-pole



The HQ series - big features in a compact design. The electrical characteristics speak for themselves. The wire connection level is designed for crimp contacts. The proven crimp connection method has been in standard use for decades. Crimp contacts are not included in the scope of delivery of inserts.

## HDC C HX BM6.0AG

**Weidmüller Interface GmbH & Co. KG**  
 Klingenbergstraße 26  
 D-32758 Detmold  
 Germany

www.weidmueller.com

## Accessories

## General ordering data

Type	HDC HQ 2 FC	Version
Order No.	<a href="#">3103510000</a>	HDC insert, Female, 400 V, 40 A, Number of poles: 2, Crimp contact,
GTIN (EAN)	4099987 151238	Installation size: 1
Qty.	1 ST	
Type	HDC HQ 2 MC	Version
Order No.	<a href="#">3103500000</a>	HDC insert, Male, 400 V, 40 A, Number of poles: 2, Crimp contact,
GTIN (EAN)	4099987 151221	Installation size: 1
Qty.	1 ST	

## 3-pole



The HQ series - big features in a compact design. The electrical characteristics speak for themselves. The wire connection level is designed for crimp contacts. The proven crimp connection method has been in standard use for decades. Crimp contacts are not included in the scope of delivery of inserts.

## General ordering data

Type	HDC HQ 3 FC	Version
Order No.	<a href="#">3103530000</a>	HDC insert, Female, 400 V, 40 A, Number of poles: 3, Crimp contact,
GTIN (EAN)	4099987 151252	Installation size: 1
Qty.	1 ST	
Type	HDC HQ 3 MC	Version
Order No.	<a href="#">3103520000</a>	HDC insert, Male, 400 V, 40 A, Number of poles: 3, Crimp contact,
GTIN (EAN)	4099987 151245	Installation size: 1
Qty.	1 ST	

## 4-pole



The HQ series - big features in a compact design. The electrical characteristics speak for themselves. The wire connection level is designed for crimp contacts. The proven crimp connection method has been in standard use for decades. Crimp contacts are not included in the scope of delivery of inserts.

## General ordering data

Type	HDC HQ 4 FC	Version
Order No.	<a href="#">3103550000</a>	HDC insert, Female, 830 V, 40 A, Number of poles: 4, Crimp contact,
GTIN (EAN)	4099987 151559	Installation size: 1
Qty.	1 ST	
Type	HDC HQ 4 MC	Version
Order No.	<a href="#">3103540000</a>	HDC insert, Male, 830 V, 40 A, Number of poles: 4, Crimp contact,
GTIN (EAN)	4099987 151283	Installation size: 1
Qty.	1 ST	

**HDC C HX BM6.0AG**

**Weidmüller Interface GmbH & Co. KG**  
 Klingenbergstraße 26  
 D-32758 Detmold  
 Germany

www.weidmueller.com

**Accessories**

**4/2-pole**



The HQ series - big features in a compact design. The electrical characteristics speak for themselves. You can also use the proven HD and HX crimp contacts here. The wire connection level is designed for crimp contacts. The proven crimp connection has been in standard use for decades.

Crimp contacts are not included in the scope of delivery of inserts.

Pole count: 4/2 (+PE)

Rated current: 40/10 A

Rated voltage: 690 / 250 V

Rated voltage acc. to UL/CSA: 600 V AC/DC

**General ordering data**

Type	HDC HQ 4/2 FC	Version
Order No.	<a href="#">1003160000</a>	HDC insert, Female, 690 V, 40 A, Number of poles: 6, Crimp connection, Installation size: HQ
GTIN (EAN)	4032248698158	
Qty.	1 ST	
Type	HDC HQ 4/2 MC	Version
Order No.	<a href="#">1003170000</a>	HDC insert, Male, 690 V, 40 A, Number of poles: 6, Crimp connection, Installation size: HQ
GTIN (EAN)	4032248698165	
Qty.	1 ST	