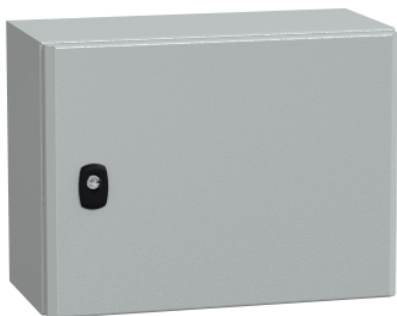


NSYS3D3420P

Wall mounted steel enclosure, PanelSeT S3D, plain door, with mounting plate, 300x400x200mm, IP66, IK10



Main

Range	PanelSeT
Product name	PanelSeT S3D
Application	Multi-purpose
Category	Compact enclosure
Enclosure nominal height	300 mm
Enclosure nominal width	400 mm
Enclosure nominal depth	200 mm
Door type	Plain
Mounting plate description	Plain
Type of gland plate	Standard
Installation accessory type	Wall-mounting
Device composition	1 body 1 mounting plate 1 door with lock 1 cable gland plate

Complementary

Body type	Single piece body Gutter-shaped front rail double sheet thickness
Number of doors	Front face: 1 door(s)
Door opening side	Reversible (120 °)
Lock type	3 mm double-bar lock
Accessibility for operation	Front
Removable parts	Door by hinges Cable gland plate by screws Mounting plate by fixing element
Material	Enclosure: steel Mounting plate: galvanised steel
Surface finish	Enclosure: epoxy-polyester powder
Colour	Enclosure: grey (RAL 7035)
Standards	IEC 62208
Product certifications	DNV[RETURN]BV[RETURN]UL[RETURN]cUL[RETURN]GL
Net weight	6.8 kg

Environment

NEMA degree of protection	NEMA 4X/13
IK degree of protection	IK10 conforming to IEC 62262
IP degree of protection	IP66 conforming to IEC 60529

The information provided in this documentation contains general descriptions and/or technical characteristics of the products of the performance of the products contained herein. This documentation is not intended as a substitute for and is not to be used for determining suitability or reliability of these products for specific user applications. It is the duty of any such user or integrator to perform the appropriate and complete risk analysis, evaluation and testing of the products with respect to the relevant specific application or use thereof. Neither Schneider Electric Industries SAS nor any of its affiliates or subsidiaries shall be responsible or liable for misuse of the information contained herein.

Packing Units

Unit Type of Package 1	PCE
Number of Units in Package 1	1
Package 1 Height	25.0 cm
Package 1 Width	32.0 cm
Package 1 Length	41.5 cm
Package 1 Weight	6.854 kg
Unit Type of Package 2	PAM
Number of Units in Package 2	56
Package 2 Height	181.0 cm
Package 2 Width	100.0 cm
Package 2 Length	120.0 cm
Package 2 Weight	400.0 kg

Offer Sustainability

Sustainable offer status	Green Premium product
REACH Regulation	 REACH Declaration
EU RoHS Directive	Pro-active compliance (Product out of EU RoHS legal scope)
Mercury free	Yes
China RoHS Regulation	 China RoHS Declaration
RoHS exemption information	 Yes
Environmental Disclosure	 Product Environmental Profile
Circularity Profile	No need of specific recycling operations

Contractual warranty

Warranty	18 months
----------	-----------