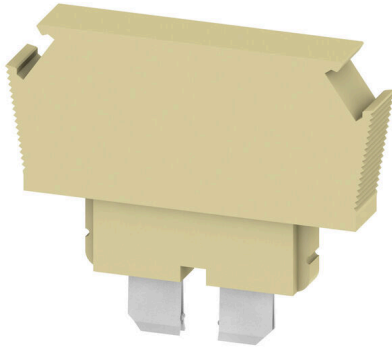


DLS 2 SAKRD -/+

Weidmüller Interface GmbH & Co. KG

Klingenbergstraße 26
D-32758 Detmold
Germany

www.weidmueller.com



The component plug is used to integrate an electrical component in a disconnect terminal block. After soldering the electronic component, the plug can be integrated into the disconnection area of our disconnect terminal blocks and thus changes the disconnect terminal block into a modular terminal block with integrated electronic component.

General ordering data

Version	Plug (terminal), 1 A, 250 V, Number of connections: 1, Number of poles: 1, Width: 5.8 mm
Order No.	0630160000
Type	DLS 2 SAKRD -/+
GTIN (EAN)	4008190091194
Qty.	50 items
Delivery status	This article will no longer be available in the future.
Available until	2026-06-30T00:00:00+02:00

DLS 2 SAKRD -/+

Weidmüller Interface GmbH & Co. KG
 Klingenbergstraße 26
 D-32758 Detmold
 Germany

www.weidmueller.com

Technical data

Approvals

ROHS	Conform
------	---------

Dimensions and weights

Height	36 mm	Height (inches)	1.4173 inch
Width	5.8 mm	Width (inches)	0.2283 inch
Net weight	3.84 g		

Temperatures

Ambient temperature	-5 °C...40 °C	Continuous operating temp., min.	-50 °C
Continuous operating temp., max.	100 °C		

Environmental Product Compliance

RoHS Compliance Status	Compliant with exemption
RoHS Exemption (if applicable/known)	7a
REACH SVHC	Lead 7439-92-1
SCIP	e1c310ef-6b67-4efa-80a6-d307472f4de9

Material data

Basic material	Polyamide 66	Colour	beige
UL 94 flammability rating	V-2		

System specifications

Version	Plug
---------	------

Additional technical data

Type of fixing	Plugged	Installation advice	Direct mounting
Explosion-tested version	No	Type of mounting	Plugged

Conductors for clamping (rated connection)

Number of connections	1
-----------------------	---

Dimensions

Pitch in mm (P)	6.00 mm
-----------------	---------

General

Number of poles	1	Installation advice	Direct mounting
-----------------	---	---------------------	-----------------

Rating data

Rated voltage	250 V	Nominal current	1 A
---------------	-------	-----------------	-----

Classifications

ETIM 8.0	EC002848	ETIM 9.0	EC002848
ETIM 10.0	EC002848	ECLASS 14.0	27-25-03-90

Technical data

ECLASS 15.0

27-25-03-90

Drawings

