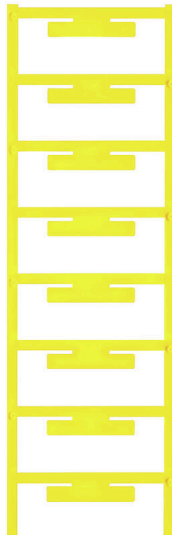


ELS 7/40 MC NE GE

Weidmüller Interface GmbH & Co. KG
 Klingenbergstraße 26
 D-32758 Detmold
 Germany

www.weidmueller.com



ELS MultiCard markers can be printed with a PrintJet, plotter or SMark printer. In particular, colour printing with PrintJet AVANCED allows the eye-catching identification marking of cables and terminal strips in many ways.

ELS 6/30 for use in the WKM 8/30 cable markers or in the EM8/30 group-tag carriers

ELS 7/40 for use in the SchT5S group-tag carriers

ELS 16/40 for use in the WKM 18/43 cable markers or the SchT5 group-tag carriers

For custom printing: Please send us a file of our labeling software M-Print PRO or M-Print PRO Online (without installation) for your labeling specifications.

General ordering data

Version	ELS, Insert markers, 0 - 0 mm, 40 x 7 mm, yellow
Order No.	1045650000
Type	ELS 7/40 MC NE GE
GTIN (EAN)	4032248779635
Qty.	40 items

ELS 7/40 MC NE GE

Weidmüller Interface GmbH & Co. KG
 Klingenbergstraße 26
 D-32758 Detmold
 Germany

www.weidmueller.com

Technical data

Approvals

ROHS	Conform
------	---------

Dimensions and weights

Depth	1 mm	Depth (inches)	0.0394 inch
Height	40 mm	Height (inches)	1.5748 inch
Width	7 mm	Width (inches)	0.2756 inch
Net weight	1.91 g		

Temperatures

Operating temperature range	-40...100 °C
-----------------------------	--------------

Environmental Product Compliance

RoHS Compliance Status	Compliant without exemption	
REACH SVHC	No SVHC above 0.1 wt%	
Product Carbon Footprint	Cradle to gate	0.012 kg CO2 eq.

General data

Material colour according to resistance code	4	
Number per sheet	8	
Type of printing	neutral	
Version	halogen-free	
Width	7 mm	
UL 94 flammability rating	V-2	
Operating temperature range, max.	100 °C	
Operating temperature range, min.	-40 °C	
Colour	yellow	
Halogen	No	
Basic material	Polyamide 66	
Printed characters	neutral	
Number of markers per packaging unit	Form of supply	MultiCard
compatible printer	PRINTJET CONNECT , MCP BASIC 2 , MCP PLUS 2	
Number of markers per combination	1 MultiCard = Insert markers	
Operating temperature range	-40...100 °C	

Conductor and cable markers

Halogen	No	Conductor O.D., max.	0 mm
Conductor O.D., min.	0 mm	Conductor O.D.	0 - 0 mm

Classifications

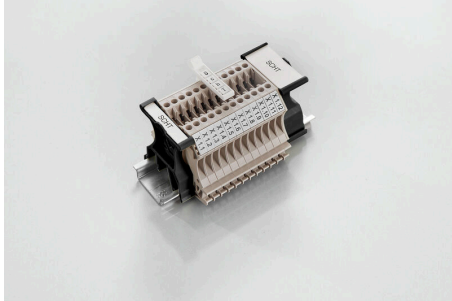
ETIM 8.0	EC001530	ETIM 9.0	EC001530
ETIM 10.0	EC001530	ECLASS 14.0	27-28-11-02
ECLASS 15.0	27-28-11-02		

Drawings



Accessories

SchT group marker carrier



The SchT 5 S group tag carriers are clipped directly onto the TS 32 mounting rail (G-rail) or the TS 35 mounting rail (top-hat rail). It is therefore possible to label the terminal strip irrespective of the terminal and the type of terminal. SchT 5 and SchT 5 S are fitted with ESO 5, STR 5 protective strips.

The SchT 7 is a hinged group tag carrier for inlay tags which enables easy access to the clamping screw. The SchT 7 is fitted with ESO 7, STR 7 protective strips or DEK 5.

Inlay tags and protective strips can be found under "Accessories".

General ordering data

Type	SCHT 5 S	Version
Order No.	1631930000	SCHT, Terminal marker, 44.5 x 9.5 mm, Pitch in mm (P): 5.00
GTIN (EAN)	4008190206680	Weidmueller, black
Qty.	20 ST	
Type	SCHT 5 S GR	Version
Order No.	1461730000	SCHT, Terminal marker, 44.5 x 9.5 mm, Pitch in mm (P): 5.00 grey
GTIN (EAN)	4050118267709	
Qty.	20 ST	
Type	SCHT 5 S V0	Version
Order No.	1762370000	SCHT, Terminal marker, 44.5 x 9.5 mm, Pitch in mm (P): 5.00 beige
GTIN (EAN)	4032248043842	
Qty.	20 ST	