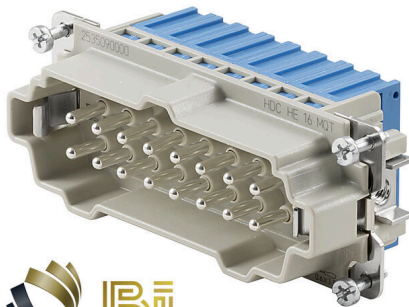


**HDC HE 16 N MQT BL**

**Weidmüller Interface GmbH & Co. KG**  
 Klingenbergstraße 26  
 D-32758 Detmold  
 Germany

www.weidmueller.com

**SNAP IN** 


With the SNAP IN connection, the conductor connection level is already open and the stripped connector can be simply inserted. In the end position, the patented clamping mechanism closes automatically. As a result, it requires virtually no maintenance and a safe, permanent and vibration-proof connection is established. Weidmüller is therefore the first and only manufacturer to offer this innovative connection system.

**General ordering data**

Version	HDC insert, Male, 500 V, 16 A, Number of poles: 16, SNAP IN, Installation size: 6
Order No.	<a href="#">2535090000</a>
Type	HDC HE 16 N MQT BL
GTIN (EAN)	4050118578225
Qty.	1 items

## HDC HE 16 N MQT BL

Weidmüller Interface GmbH & Co. KG  
Klingenbergstraße 26  
D-32758 Detmold  
Germany

www.weidmueller.com

## Technical data

## Approvals

Approvals



ROHS Conform

UL File Number Search [UL Website](#)

Certificate No. (cURus) E92202

## Dimensions and weights

Depth	84.5 mm	Depth (inches)	3.3268 inch
Height	36.9 mm	Height (inches)	1.4528 inch
Width	34 mm	Width (inches)	1.3386 inch
Net weight	78 g		

## Temperatures

Limit temperature -40 °C ... 125 °C

## Environmental Product Compliance

RoHS Compliance Status Compliant with exemption

RoHS Exemption (if applicable/known) 6c

REACH SVHC Lead 7439-92-1, Potassium perfluorobutane sulfonate 29420-49-3

SCIP e98b2b24-ba23-41bf-8d19-0dda3647412f

## Dimensions

Width 34 mm

## General data

Number of poles	16		
Plugging cycles, silver	≥ 500		
Plugging cycles, gold	≥ 500		
Type of connection	SNAP IN		
Installation size	6		
UL 94 flammability rating	V-0		
Volume resistance	≤2 mΩ		
Insulation resistance	1010 Ω		
Insulating material	PC glass-fibre reinforced (UL-listed and railway-certified), PA 66/6		
Insulating material group	IIIa		
Tightening torque, max. PE connection	1.5 Nm		
Surface finish	Silver passivated		
Type	Male		
Pollution severity	3		
Tightening torque, min. PE connection	1.2 Nm		
Basic material	Copper alloy		
Series	HE		
Rated voltage (DIN EN 61984)	500 V		
Rated voltage according to UL/CSA	600 V AC/DC		
Rated impulse voltage (DIN EN 61984)	6 kV		
Rated current (DIN EN 61984)	16 A		
Rated current (UR)	Wire connection cross section AWG	AWG 18	
	Rated current	7 A	

## HDC HE 16 N MQT BL

**Weidmüller Interface GmbH & Co. KG**  
 Klingenbergstraße 26  
 D-32758 Detmold  
 Germany

www.weidmueller.com

## Technical data

Rated current (cUR)	Wire connection cross section AWG	AWG 18
	Rated current	7.1 A
Free from halogens	true	
Low smoke acc. DIN EN 45545-2	Yes	
BG	6	
Number of signal contacts	0	
Number of power contacts	16	

### Connection data PE

Connection type PE	Screw connection	Blade size, slotted (PE connection)	SD 0.8 x 4.0
Stripping length PE connection	10 mm	Tightening torque, max. PE connection	1.5 Nm
Tightening torque, min. PE connection	1.2 Nm	Fixing screw	M 4
Rated cross-section	4 mm <sup>2</sup>	Wire cross section, AWG (PE), min.	AWG 20
Wire cross section, AWG (PE), max.	AWG 12		

### Version

Wire connection cross section AWG, max.	AWG 16	Stripping length, rated connection	10 mm
Type of connection	SNAP IN	Installation size	6
Volume resistance	≤2 mΩ	Blade size	SD 0.6 x 3.5
Wire connection cross section AWG, min.	AWG 20	Wire cross-section, solid, max.	2.5 mm <sup>2</sup>
Wire cross-section, solid, min.	0.5 mm <sup>2</sup>	Wire connection cross-section, finely stranded with wire-end ferrules DIN 46228/1, max.	2.5 mm <sup>2</sup>
Wire connection cross-section, finely stranded with wire-end ferrules DIN 46228/1, min.	0.34 mm <sup>2</sup>	Wire connection cross section, finely stranded, max.	2.5 mm <sup>2</sup>
Wire connection cross section, finely stranded, min.	0.5 mm <sup>2</sup>	Conductor cross-section, max.	2.5 mm <sup>2</sup>
Conductor cross-section, min.	1 mm <sup>2</sup>	Surface finish	Silver passivated
Basic material	Copper alloy	BG	6

### Classifications

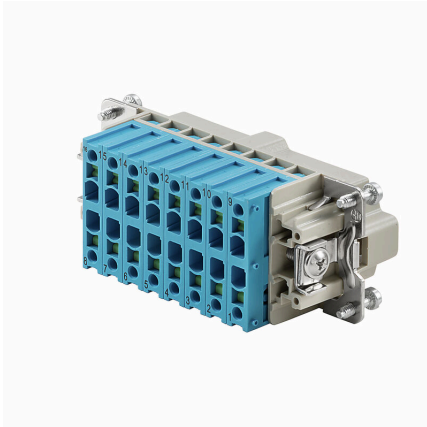
ETIM 8.0	EC000438	ETIM 9.0	EC000438
ETIM 10.0	EC000438	ECLASS 14.0	27-44-02-05
ECLASS 15.0	27-44-02-05		

**HDC HE 16 N MQT BL**

**Weidmüller Interface GmbH & Co. KG**  
Klingenbergstraße 26  
D-32758 Detmold  
Germany

**Drawings**

[www.weidmueller.com](http://www.weidmueller.com)



**HDC HE 16 N MQT BL**

**Weidmüller Interface GmbH & Co. KG**  
 Klingenbergstraße 26  
 D-32758 Detmold  
 Germany

www.weidmueller.com

**Accessories**

**Slotted screwdriver**



VDE insulated slot-head screwdriver, SDI DIN 7437, ISO 2380/2, drive output acc. to DIN 5264, ISO 2380/1. SoftFinish grip

**General ordering data**

Type	SDIS 0.6X3.5X100	Version	
Order No.	<a href="#">9008390000</a>	Screwdriver, Screwdriver	
GTIN (EAN)	4032248056354		
Qty.	1 ST		

Type	SDS 0.6X3.5X100	Version	
Order No.	<a href="#">9008330000</a>	Screwdriver, Screwdriver	
GTIN (EAN)	4032248056286		
Qty.	1 ST		

**DSTV**



Various accessories are available for our inserts. This includes coding elements for the inserts.

**General ordering data**

Type	DSTV COBU5	Version	
Order No.	<a href="#">1471500000</a>	Heavy-duty connectors, Accessories, Coding element	
GTIN (EAN)	4008190178543		
Qty.	100 ST		

Type	DSTV COST4	Version	
Order No.	<a href="#">1471300000</a>	Heavy-duty connectors, Accessories, Coding System	
GTIN (EAN)	4008190017354		
Qty.	100 ST		