

ZVR ZPS2.5

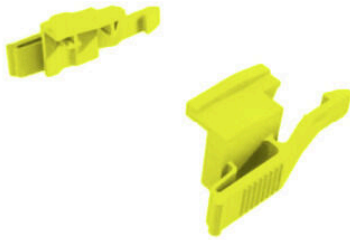
Weidmüller Interface GmbH & Co. KG

Klingenbergstraße 26

D-32758 Detmold

Germany

www.weidmueller.com



The plugs for our WeiCoS-System are available for all different connection systems. The product range includes preassembled connectors from 1 to 10 poles and the possibility of an individual assembly. This ensures maximum flexibility for every application. The customized accessories increase the safety and protection against environmental influences.

General ordering data

| | |
|------------|--|
| Version | Z-series, Locking clips, yellow, 15 mm |
| Order No. | 1878620000 |
| Type | ZVR ZPS2.5 |
| GTIN (EAN) | 4032248471591 |
| Qty. | 20 items |

ZVR ZPS2.5

Weidmüller Interface GmbH & Co. KG
 Klingenbergstraße 26
 D-32758 Detmold
 Germany

www.weidmueller.com

Technical data

Approvals

| | |
|------|---------|
| ROHS | Conform |
|------|---------|

Dimensions and weights

| | | | |
|------------|---------|-----------------|-------------|
| Depth | 38.4 mm | Depth (inches) | 1.5118 inch |
| Height | 65.5 mm | Height (inches) | 2.5787 inch |
| Width | 15 mm | Width (inches) | 0.5906 inch |
| Net weight | 4.44 g | | |

Temperatures

| | | | |
|----------------------------------|----------------|----------------------------------|----------------|
| Storage temperature | -25 °C...55 °C | Ambient temperature | -50 °C...55 °C |
| Continuous operating temp., min. | -50 °C | Continuous operating temp., max. | 100 °C |

Environmental Product Compliance

| | |
|------------------------|-----------------------------|
| RoHS Compliance Status | Compliant without exemption |
| REACH SVHC | No SVHC above 0.1 wt% |

Material data

| | | | |
|---------------------------|-------------|--------|--------|
| Basic material | PA 66 GF 30 | Colour | yellow |
| UL 94 flammability rating | HB | | |

System specifications

| | |
|---------|---------|
| Version | Latches |
|---------|---------|

Additional technical data

| | |
|---------------------|-----------------|
| Installation advice | Direct mounting |
|---------------------|-----------------|

General

| | |
|---------------------|-----------------|
| Installation advice | Direct mounting |
|---------------------|-----------------|

Classifications

| | | | |
|-------------|-------------|-------------|-------------|
| ETIM 8.0 | EC002848 | ETIM 9.0 | EC002848 |
| ETIM 10.0 | EC002848 | ECLASS 14.0 | 27-25-03-90 |
| ECLASS 15.0 | 27-25-03-90 | | |