

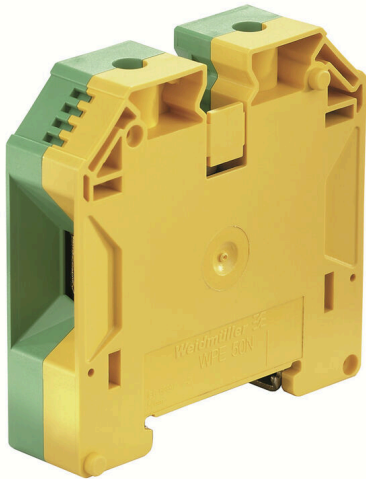
**WPE 50N IR****Weidmüller Interface GmbH & Co. KG**

Klingenbergstraße 26

D-32758 Detmold

Germany

www.weidmueller.com

**Product image**

More and more components need to be housed within a confined space, in switchgear and panels. As part of the power feed-in, connecting conductors is becoming increasingly challenging, especially for large cross-sections. Our comprehensive range of connection solutions also enables convenient wiring in challenging space conditions. The compact design and the combination of many practical handling benefits make the supply of power to switchgear and panels simple, efficient, and space-saving.

**General ordering data**

|            |  |
|------------|--|
| Version    | PE terminal, Screw connection, Green/yellow, 50 mm <sup>2</sup> , 1000 V, Number of connections: 2, Number of levels: 1, TS 35, V-0, Wemid |
| Order No.  | <a href="#">1422430000</a>   |
| Type       | WPE 50N IR   |
| GTIN (EAN) | 4050118226119  |
| Qty.       | 10 items   |

## WPE 50N IR

Weidmüller Interface GmbH &amp; Co. KG

Klingenbergstraße 26

D-32758 Detmold

Germany

www.weidmueller.com

## Technical data

## Approvals

Approvals



ROHS Conform

## Dimensions and weights

|                          |             |                |             |
|--------------------------|-------------|----------------|-------------|
| Depth                    | 69.6 mm     | Depth (inches) | 2.7402 inch |
| Depth including DIN rail | 70 mm       | Height         | 71 mm       |
| Height (inches)          | 2.7953 inch | Width          | 18.5 mm     |
| Width (inches)           | 0.7283 inch | Net weight     | 126.14 g    |

## Temperatures

|                                  |                |                                  |                |
|----------------------------------|----------------|----------------------------------|----------------|
| Storage temperature              | -25 °C...55 °C | Ambient temperature              | -50 °C...85 °C |
| Continuous operating temp., min. | -50 °C         | Continuous operating temp., max. | 130 °C         |

## Environmental Product Compliance

|                                      |                                      |                  |  |
|--------------------------------------|--------------------------------------|------------------|--|
| RoHS Compliance Status               | Compliant with exemption             |                  |  |
| RoHS Exemption (if applicable/known) | 6c                                   |                  |  |
| REACH SVHC                           | Lead 7439-92-1                       |                  |  |
| SCIP                                 | 1007fa59-32ea-4163-aa91-1482deede565 |                  |  |
| Product Carbon Footprint             | Cradle to gate                       | 1.712 kg CO2 eq. |  |

## Material data

|                           |       |        |              |
|---------------------------|-------|--------|--------------|
| Basic material            | Wemid | Colour | Green/yellow |
| UL 94 flammability rating | V-0   |        |              |

## System specifications

|                                     |   |                               |     |
|-------------------------------------|---|-------------------------------|-----|
| Version                             | Screw connection, With PE connection, in closed state | End cover plate required      | No  |
| Number of potentials                | 1   | Number of levels              | 1   |
| Number of clamping points per level | 2   | Number of potentials per tier | 1   |
| Levels cross-connected internally   | No  | PE connection                 | Yes |
| Mounting rail                       | TS 35   | N-function                    | No  |
| PE function                         | Yes   | PEN function                  | Yes |

## 2 clampable conductors (H05V/H07V) with equal cross-section (rated connection)

|  |                    |  |                   |
|--|--------------------|--|-------------------|
| Wire connection cross section, finely stranded with wire-end ferrules DIN 46228/1, 2 clampable wires, max. | 16 mm <sup>2</sup> | Wire connection cross section, finely stranded with wire-end ferrules DIN 46228/1, 2 clampable wires, min. | 6 mm <sup>2</sup> |
| Wire cross-section, finely stranded, two clampable wires, max.   | 16 mm <sup>2</sup> | Wire connection cross section, finely stranded, two clampable wires, min.                                  | 6 mm <sup>2</sup> |
| Cross-section for connected wire, stranded, two clampable wires, max.                                      | 16 mm <sup>2</sup> | Cross-section for connected wire, stranded, two clampable wires, min.                                      | 6 mm <sup>2</sup> |

## Additional technical data

|                     |                 |                             |    |
|---------------------|-----------------|-----------------------------|----|
| Open sides          | closed          | Number of similar terminals | 1  |
| Installation advice | when screwed in | Explosion-tested version    | No |

## WPE 50N IR

**Weidmüller Interface GmbH & Co. KG**

Klingenbergstraße 26  
D-32758 Detmold  
Germany

www.weidmueller.com

## Technical data

|                  |                 |         |                  |
|------------------|-----------------|---------|------------------|
| Type of mounting | when screwed in | Locking | for screw fixing |
|------------------|-----------------|---------|------------------|

### Conductors for clamping (additional connection)

Connection type, additional connection Screw connection

### Conductors for clamping (rated connection)

|   |                      |   |                      |
|---|----------------------|---|----------------------|
| Gauge to IEC 60947-1  | B10                  | Wire connection cross section AWG, max.   | AWG 0                |
| Connection direction  | on side              | Tightening torque, max.   | 6 Nm                 |
| Tightening torque, min.   | 4 Nm                 | Stripping length  | 24 mm                |
| Type of connection  | Screw connection     | Number of connections   | 2                    |
| Clamping range, max.  | 70 mm <sup>2</sup>   | Clamping range, min.  | 5.26 mm <sup>2</sup> |
| Clamping screw  | M 6                  | Blade size  | S4 (DIN 6911)        |
| Wire connection cross section AWG, min.   | AWG 14               | Wire connection cross-section, finely stranded with wire-end ferrules DIN 46228/4, min. | 5.26 mm <sup>2</sup> |
| Wire connection cross-section, finely stranded with wire-end ferrules DIN 46228/1, max. | 50 mm <sup>2</sup>   | Wire connection cross-section, finely stranded with wire-end ferrules DIN 46228/1, min. | 5.26 mm <sup>2</sup> |
| Wire connection cross section, finely stranded, max.                                    | 50 mm <sup>2</sup>   | Wire connection cross section, finely stranded, min.                                    | 5.26 mm <sup>2</sup> |
| Connection cross-section, stranded, max.  | 70 mm <sup>2</sup>   | Connection cross-section, stranded, min.  | 5.26 mm <sup>2</sup> |
| Wire connection cross-section, solid core, max.   | 16 mm <sup>2</sup>   | Wire connection cross-section, solid core, min.   | 5.26 mm <sup>2</sup> |
| Connection cross-section, finely stranded, min.   | 5.26 mm <sup>2</sup> |   |                      |

### General

|   |        |                     |                 |
|---|--------|---------------------|-----------------|
| Wire connection cross section AWG, max. | AWG 0  | Installation advice | when screwed in |
| Wire connection cross section AWG, min. | AWG 14 | Standards           | IEC 60947-7-2   |
| Mounting rail                           | TS 35  |                     |                 |

### Rating data

|  |                    |  |               |
|--|--------------------|--|---------------|
| Rated cross-section                          | 50 mm <sup>2</sup> | Rated voltage to adjoining terminal                  | 1000 V        |
| Rated DC voltage                             | 1000 V             | Standards  | IEC 60947-7-2 |
| Volume resistance according to IEC 60947-7-x | 0.21 mΩ            | Rated impulse withstand voltage to adjacent terminal | 8 kV          |
| Power loss in accordance with IEC 60947-7-x  | 0.00 W             | Pollution severity                                   | 3             |

### Classifications

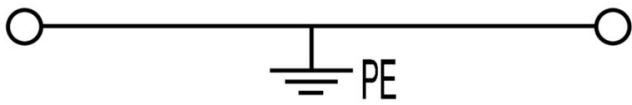
|             |             |             |             |
|-------------|-------------|-------------|-------------|
| ETIM 8.0    | EC000901    | ETIM 9.0    | EC000901    |
| ETIM 10.0   | EC000901    | ECLASS 14.0 | 27-25-01-03 |
| ECLASS 15.0 | 27-25-01-03 |             |             |

**WPE 50N IR**

**Weidmüller Interface GmbH & Co. KG**  
Klingenbergstraße 26  
D-32758 Detmold  
Germany

[www.weidmueller.com](http://www.weidmueller.com)

**Drawings**



## WPE 50N IR

Weidmüller Interface GmbH &amp; Co. KG

Klingenbergstraße 26

D-32758 Detmold

Germany

www.weidmueller.com

## Accessories

## End bracket



Weidmüller's range of products includes end brackets that guarantee a permanent, reliable mounting on the terminal rail and prevent sliding. Versions with and without screws are available. The end brackets include marking options, also for group markers, and also a test plug holder.

## General ordering data

|            |                            |  |  |
|------------|----------------------------|--|--|
| Type       | WEW 35/1                   | Version  |  |
| Order No.  | <a href="#">1059000000</a> | End bracket, dark beige, TS 35, V-2, Wemid, Width: 12 mm, 100 °C |  |
| GTIN (EAN) | 4008190172282              |  |  |
| Qty.       | 50 ST                      |  |  |

## Blank



The Dekafix (DEK) marker is the universal marker for all conductor and plug-in connectors as well as for electronic sub-assemblies. The system is ideal for short number sequences and covers a wide range of ready-printed markers.

Strips for fast installation in only one work step. The printing is easy to read, rich in contrast and available in various widths.

- Large range of ready-to-use markers
  - Strips for fast installation
  - Terminal markers, suitable for all Weidmüller cable connectors
  - Available as blank MultiCard or with standard printing
- For custom printing: Please send us a file of our labeling software M-Print PRO or M-Print PRO Online (without installation) for your labeling specifications.

## General ordering data

|            |                            |   |  |
|------------|----------------------------|---|--|
| Type       | DEK 5/5 MC NE WS           | Version   |  |
| Order No.  | <a href="#">1609801044</a> | Dekafix, Terminal marker, 5 x 5 mm, Pitch in mm (P): 5.00 |  |
| GTIN (EAN) | 4008190397111              | Weidmueller, white  |  |
| Qty.       | 1000 ST                    |   |  |
| Type       | WS 12/6.5 MC NE WS         | Version   |  |
| Order No.  | <a href="#">1609920000</a> | WS, Terminal marker, 12 x 6.5 mm, Pitch in mm (P): 6.50   |  |
| GTIN (EAN) | 4008190203511              | Weidmueller, Allen-Bradley, white                         |  |
| Qty.       | 540 ST                     |   |  |

## WPE 50N IR

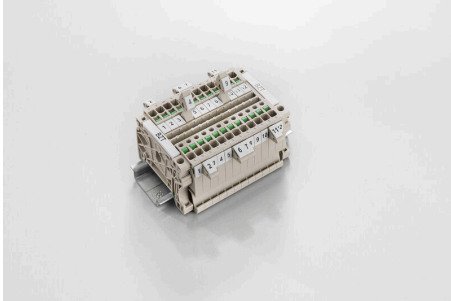
**Weidmüller Interface GmbH & Co. KG**

Klingenbergstraße 26  
D-32758 Detmold  
Germany

www.weidmueller.com

## Accessories

### Marker holder



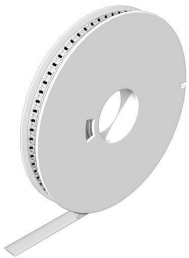
The marker holder offer the possibility of additional mounting of standard markers with a pitch of 5 or 5.1 mm. The angled holders can be optionally snapped together and could be mounted in all standard marking channels of the Klippon® Connect modular terminal blocks. Fitting marker types could be found under the respective accessories of the designation marking holder.

#### General ordering data

|            |                            |                            |
|------------|----------------------------|----------------------------|
| Type       | BZT 1 WS 10/5              | Version                    |
| Order No.  | <a href="#">1805490000</a> | Accessories, Marker holder |
| GTIN (EAN) | 4032248270231              |                            |
| Qty.       | 100 ST                     |                            |

|            |                            |                            |
|------------|----------------------------|----------------------------|
| Type       | BZT 1 ZA WS 10/5           | Version                    |
| Order No.  | <a href="#">1805520000</a> | Accessories, Marker holder |
| GTIN (EAN) | 4032248270248              |                            |
| Qty.       | 100 ST                     |                            |

### WS 12/6.5



#### WS/ DEK

MultiMark terminal markers use an innovative composite material made from two components. The hard base contour of the marker snaps securely into the connector. The elastic surface finish makes the marker easy to mount. This specially punched material enables the strips to be stretched to accommodate the slight variations in spacing that tend to add up, especially with long terminal blocks. Another advantage: the excellent printability of the surface material guarantees durable and wear-resistant labelling. A print resolution of 300 dpi also produces a very legible script.

Your benefits with MultiMark

- Firm hold and durable printing
- Continuous strips save installation time
- Easy mounting thanks to an innovative composite material
- Large label field for optimal legibility
- High flexibility thanks to manufacturer independence

#### General ordering data

|            |                            |  |
|------------|----------------------------|--|
| Type       | WS 12/6.5 MM WS            | Version  |
| Order No.  | <a href="#">2619930000</a> | WS, Terminal marker, 12 x 6.5 mm, Weidmueller, white |
| GTIN (EAN) | 4050118626155              |  |
| Qty.       | 600 ST                     |  |