

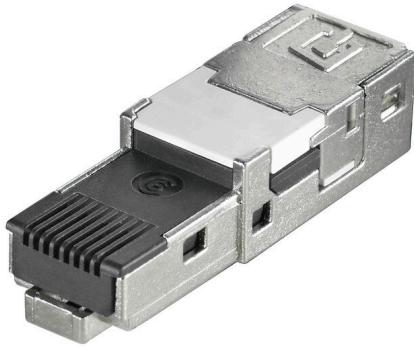
IE-PI-RJ45-FH-B**Weidmüller Interface GmbH & Co. KG**

Klingenbergstraße 26

D-32758 Detmold

Germany

www.weidmueller.com



RJ45 inserts for plug-in connectors ver.1 / 4 / 5 / 14,
HDC and junction boxes IE-OM...; IE-OP...; IE-CC...

General ordering data

| | |
|------------|---|
| Version | Plug insert RJ45 IDC, Plug insert RJ45, no tools required, EIA/TIA T568 B |
| Order No. | 1132020000 |
| Type | IE-PI-RJ45-FH-B |
| GTIN (EAN) | 4032248912056 |
| Qty. | 10 items |

Technical data

Approvals

Approvals



| | |
|-------------------------|----------------------------|
| ROHS | Conform |
| UL File Number Search | UL Website |
| Certificate No. (cURus) | E471884 |
| Certificate no. (cULus) | E316369 |

Dimensions and weights

| | |
|------------|--------|
| Net weight | 12.7 g |
|------------|--------|

Temperatures

| | | |
|--------------------------|-----------------------|----------------|
| Storage temperature | Operating temperature | -40 °C...70 °C |
| Installation temperature | | |

Environmental Product Compliance

| | |
|------------------------|-----------------------------|
| RoHS Compliance Status | Compliant without exemption |
| REACH SVHC | No SVHC above 0.1 wt% |

General data

| | | | |
|--|--|--|---|
| Fire load | 49 kJ | Connection 1 | RJ45 |
| Connection 2 | IDC | Description of article | Plug insert RJ45, no tools required |
| Wiring | EIA/TIA T568 B | Colour | Miscellaneous |
| Housing main material | Zinc diecast | Insulation cross-section, min. | 0.85 mm |
| Insulation cross-section, max. | 1.6 mm | Category | Cat.6A / Class EA (ISO/IEC 11801 2010) |
| Contact surface | Gold over Nickel, Au ≥ 0.8 µm | Connection diameter, solid | 0.4...0.64 mm |
| Conductor connection cross-section, solid (AWG) | AWG 24...AWG 22 | Conductor connection cross-section, flexible (AWG) | AWG 26...AWG 22 |
| Conductor connection cross-section, extremely flexible | , Approval of the cable by Weidmüller necessary | Conductor connection cross-section, extremely flexible (AWG) | , Approval of the cable by Weidmüller necessary |
| Note, very finely stranded line connection | Approval of the cable by Weidmüller necessary | Shielding | 360° all-round enclosure |
| Protection degree | IP67 with housing | Plugging cycles | 750 |
| Ability to reconnect | ≥ 10 cycles (for the same or larger cross-section) | | |

Electrical properties

| | | | |
|--|----------------|---------------------------------------|----------------------------|
| Contact resistance | ≤ 20 mΩ | Dielectric strength, contact / shield | ≥ 1500 V AC/DC |
| Dielectric strength, contact / contact | ≥ 1000 V AC/DC | Insulation resistance | 500 MΩ |
| Current-carrying capacity at 50 °C | 1 A | PoE / PoE+ | conforming to IEEE 802.3at |

General standards

| | | | |
|---|---------|-----------------------|----------------|
| Certificate No. (cURus) | E471884 | Connector standard | IEC 60603-7-51 |
| UL standard for communication accessories | UL 1863 | IP protection classes | IEC 60529 |

Technical data

Certificate no. (cULus) E316369

Important note

Product information RJ45 inserts for plug-in connectors ver.1 / 4 / 5 / 14 and HDC

Classifications

| | | | |
|-------------|-------------|-------------|-------------|
| ETIM 8.0 | EC001121 | ETIM 9.0 | EC001121 |
| ETIM 10.0 | EC001121 | ECLASS 14.0 | 27-44-03-90 |
| ECLASS 15.0 | 27-44-03-90 | | |

Drawings

Printing



