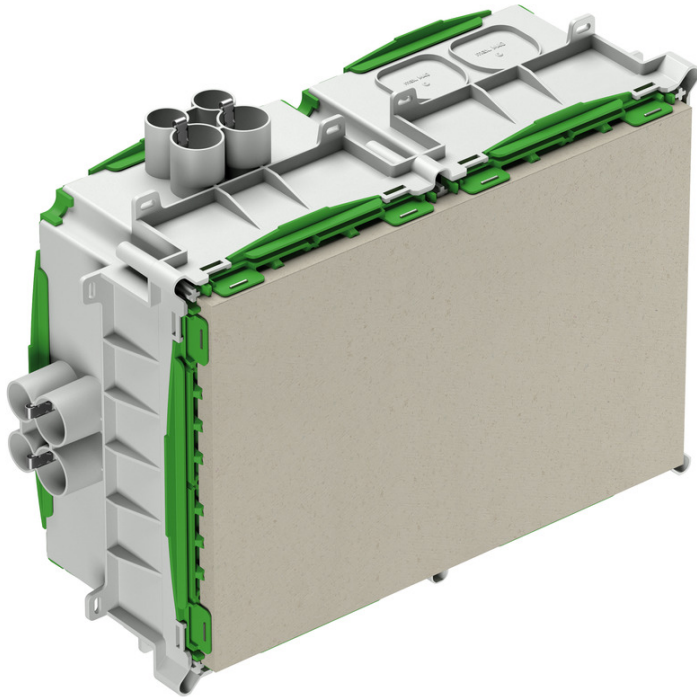


Installation housing

IBTLED 3-f



IBTLED 3-f

Installation housing

Productnumber: 98220201

Dimensions: 277 x 400 x 135 mm

Installation housing, for prefabricated construction, halogen-free, for the installation of LV/HV/LED lights and speakers, announcement and call systems, for the installation of VDE-tested lights to DIN EN 60598 (VDE 0711), and with F or MM marking, protection class IP30, rated insulation voltage: 400V AC, Halogen free

maximum installation depth for luminaires, speakers, announcement and call systems: 100 mm, lamp output, halogen max. 75 W, lamp output LED max. 35 W, additional inserts 4 x to M40, outlet aperture: Fermacell® board, variable up to max. 200 x 300 mm, 16 combi-conduit entries 8 x M20, M25, 8 x M25, integrated conduit stopper and strain relief for M20, M25 conduits, adhesive fixing or nail installation, combination conduit insertion and membrane for perforation, sealing range M16 - M40



Technical Data

electrical characteristics

Rated insulation voltage AC:	400 V
Type of protection:	IP30
Suitable for:	Concrete construction
maximum LED power:	35 Watt

Colours

Base unit colour:	grey
Cover colour:	green

Dimensions

Width:	277 mm
Length:	400 mm
Height:	135 mm
Inner length:	300 mm
Inner width:	200 mm
Inner height:	125 mm
maximum installation cut-out:	200.300 mm
Weight:	2.06 kg

Material characteristics

Halogen free:	yes
Flammability class according with UL94:	HB
Glow-wire flammability:	650 °C (EN 60695-2-11)

mechanical properties

Type of fastening:	adhesive fixing or nail installation
Fermacell board load bearing capacity:	5 kg
Type of fastening:	Concrete construction

Ambient conditions

max. relative humidity 25°C:	- %
max. relative humidity 40°C:	50 %
Min. ambient temperature:	-25 °C
Max. ambient temperature:	60 °C
24h ambient temperature:	35 °C

Sales Information

EAN:	4013902642632
ETIM Class:	EC000414
Custom tariff number:	39269097
Minimum order quantity:	1

Material

Base unit material:	Polypropylene
Cover material:	Polypropylene