

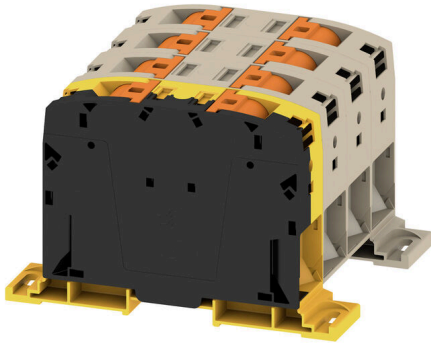
A2C 150/185 3FT-FE-DM**Weidmüller Interface GmbH & Co. KG**

Klingenbergstraße 26

D-32758 Detmold

Germany

www.weidmueller.com



More and more components need to be housed within a confined space, in switchgear and panels. As part of the power feed-in, connecting conductors is becoming increasingly challenging, especially for large cross-sections. Our comprehensive range of connection solutions also enables convenient wiring in challenging space conditions. The compact design and the combination of many practical handling benefits make the supply of power to switchgear and panels simple, efficient, and space-saving.

General ordering data

| | |
|------------|---|
| Version | Feed-through terminal, PUSH IN, 150 mm ² , 1000 V, 309 A, dark beige |
| Order No. | 2728820000 |
| Type | A2C 150/185 3FT-FE-DM |
| GTIN (EAN) | 4050118801729 |
| Qty. | 1 items |

A2C 150/185 3FT-FE-DM

Weidmüller Interface GmbH & Co. KG
Klingenbergstraße 26
D-32758 Detmold
Germany

www.weidmueller.com

Technical data

Approvals

Approvals



UL File Number Search [UL Website](#)
Certificate No. (cURus) E60693

Dimensions and weights

| | | | |
|------------|-----------|-----------------|-------------|
| Depth | 98 mm | Depth (inches) | 3.8583 inch |
| Height | 151 mm | Height (inches) | 5.9449 inch |
| Width | 34 mm | Width (inches) | 1.3386 inch |
| Net weight | 1240.94 g | | |

Temperatures

| | | | |
|----------------------------------|----------------|----------------------------------|----------------|
| Storage temperature | -25 °C...55 °C | Ambient temperature | -60 °C...85 °C |
| Continuous operating temp., min. | -60 °C | Continuous operating temp., max. | 130 °C |

Environmental Product Compliance

RoHS Compliance Status Compliant without exemption
REACH SVHC No SVHC above 0.1 wt%

Material data

| | | | |
|--------------------------------|--------|---------------------------|------------|
| Basic material | Wemid | Colour | dark beige |
| Colour of operational elements | orange | UL 94 flammability rating | V-0 |

Rating data IECEx/ATEX

| | | | |
|--------------------------------|---------------------|---------------------------------|---------------------|
| Certificate No. (ATEX) | TUEV16ATEX7909U | Certificate No. (IECEX) | IECEXTUR16.0036U |
| Max. voltage (ATEX) | 1100 V | Current (ATEX) | 272 A |
| Wire cross section max. (ATEX) | 185 mm ² | Max. voltage (IECEX) | 1100 V |
| Current (IECEX) | 272 A | Wire cross section max. (IECEX) | 185 mm ² |

System specifications

| | | | |
|-----------------------------------|----|-------------------------------------|----------------|
| End cover plate required | No | Number of potentials | 4 |
| Number of levels | 1 | Number of clamping points per level | 8 |
| Levels cross-connected internally | No | Mounting rail | Mounting plate |
| N-function | No | PE function | No |
| PEN function | No | | |

Additional technical data

| | | | |
|------------------|-----------------|--------------------------|----|
| Open sides | closed | Snap-on | No |
| Type of fixing | when screwed in | Explosion-tested version | No |
| Type of mounting | Direct mounting | | |

Conductors for clamping (rated connection)

| | | | |
|----------------------|---------|---|-----------|
| Gauge to IEC 60947-1 | B13 | Wire connection cross section AWG, max. | kcmil 300 |
| Connection direction | on side | Stripping length | 40 mm |

A2C 150/185 3FT-FE-DM

Weidmüller Interface GmbH & Co. KG
 Klingenbergstraße 26
 D-32758 Detmold
 Germany

www.weidmueller.com

Technical data

| | | | |
|---|---------------------|---|--------------------|
| Type of connection | PUSH IN | Number of connections | 8 |
| Clamping range, max. | 185 mm ² | Clamping range, min. | 50 mm ² |
| Blade size | 1.0 x 5.5 mm | Wire connection cross section AWG, min. | AWG 1/0 |
| Wire connection cross-section, finely stranded with wire-end ferrules DIN 46228/4, max. | 150 mm ² | Wire connection cross-section, finely stranded with wire-end ferrules DIN 46228/4, min. | 50 mm ² |
| Wire connection cross-section, finely stranded with wire-end ferrules DIN 46228/1, max. | 150 mm ² | Wire connection cross-section, finely stranded with wire-end ferrules DIN 46228/1, min. | 50 mm ² |
| Wire connection cross section, finely stranded, max. | 185 mm ² | Wire connection cross section, finely stranded, min. | 50 mm ² |
| Connection cross-section, stranded, max. | 185 mm ² | Connection cross-section, stranded, min. | 50 mm ² |
| Wire connection cross-section, solid core, max. | 185 mm ² | Wire connection cross-section, solid core, min. | 50 mm ² |
| Connection cross-section, finely stranded, min. | 50 mm ² | | |

General

| | | | |
|---|---------------|---|----------------|
| Wire connection cross section AWG, max. | kcmil 300 | Wire connection cross section AWG, min. | AWG 1/0 |
| Standards | IEC 60947-7-1 | Mounting rail | Mounting plate |

Rating data

| | | | |
|--|---------------------|---------------------------------|---------------|
| Rated cross-section | 150 mm ² | Rated voltage | 1000 V |
| Rated DC voltage | 1500 V | Nominal current | 309 A |
| Current at maximum wires | 309 A | Standards | IEC 60947-7-1 |
| Volume resistance according to IEC 60947-7-x | 0.1 mΩ | Rated impulse withstand voltage | 8 kV |
| Power loss in accordance with IEC 60947-7-x | 9.89 W | Surge voltage category | III |
| Pollution severity | 3 | | |

UL rating data

| | | | |
|--|-----------|--|-------|
| Conductor size Factory wiring max. (cURus) | 350 kcmil | Voltage size B (cURus) | 600 V |
| Certificate No. (cURus) | E60693 | Conductor size Field wiring min. (cURus) 2 AWG | |
| Conductor size Factory wiring min. (cURus) | 2 AWG | Current size B (cURus) | 310 A |
| Voltage size C (cURus) | 600 V | Current size C (cURus) | 310 A |
| Conductor size Field wiring max. (cURus) | 350 kcmil | | |

Important note

| | |
|---------------------|---|
| Product information | The max. connectable wire reduces by one wire size if a cross connector is used that has to be mounted in the wire entry. |
|---------------------|---|

Classifications

| | | | |
|-------------|-------------|-------------|-------------|
| ETIM 8.0 | EC000897 | ETIM 9.0 | EC000897 |
| ETIM 10.0 | EC000897 | ECLASS 14.0 | 27-25-01-01 |
| ECLASS 15.0 | 27-25-01-01 | | |

Drawings





A2C 150/185 3FT-FE-DM

Weidmüller Interface GmbH & Co. KG
 Klingenbergstraße 26
 D-32758 Detmold
 Germany

Accessories

www.weidmueller.com

WS 8/16



WS/ DEK

MultiMark terminal markers use an innovative composite material made from two components. The hard base contour of the marker snaps securely into the connector. The elastic surface finish makes the marker easy to mount. This specially punched material enables the strips to be stretched to accommodate the slight variations in spacing that tend to add up, especially with long terminal blocks. Another advantage: the excellent printability of the surface material guarantees durable and wear-resistant labelling. A print resolution of 300 dpi also produces a very legible script.

Your benefits with MultiMark

- Firm hold and durable printing
- Continuous strips save installation time
- Easy mounting thanks to an innovative composite material
- Large label field for optimal legibility
- High flexibility thanks to manufacturer independence

General ordering data

| | | | |
|------------|----------------------------|--|--|
| Type | WS-A 8/16 MM WS | Version | |
| Order No. | 2619910000 | WS, Terminal marker, 8 x 16 mm, Weidmueller, white | |
| GTIN (EAN) | 4050118626179 | | |
| Qty. | 200 ST | | |

auxillary connection



The additional connection enables a separate voltage tap. This can be used, for example, for the emergency power supply before the main switch or simply as an additional connection within the application.

General ordering data

| | | | |
|------------|----------------------------|--|--|
| Type | AAC 50-185 2X10 | Version | |
| Order No. | 2663420000 | Auxiliary connection (terminal), 10 mm ² , Number of connections: 2 | |
| GTIN (EAN) | 4064675027966 | | |
| Qty. | 5 ST | | |
| Type | AAC 50-185 2X10 BK-YL | Version | |
| Order No. | 2663450000 | Auxiliary connection (terminal), 10 mm ² , Number of connections: 2 | |
| GTIN (EAN) | 4064675027997 | | |
| Qty. | 5 ST | | |
| Type | AAC 50-185 2X10 BL | Version | |
| Order No. | 2663430000 | Auxiliary connection (terminal), 10 mm ² , Number of connections: 2 | |
| GTIN (EAN) | 4064675027973 | | |
| Qty. | 5 ST | | |

A2C 150/185 3FT-FE-DM

Weidmüller Interface GmbH & Co. KG
 Klingenbergstraße 26
 D-32758 Detmold
 Germany

www.weidmueller.com

Accessories

| | | | |
|------------|----------------------------|--|--|
| Type | AAC 50-185 2X10 GN-YL | Version | |
| Order No. | 2663440000 | Auxiliary connection (terminal), 10 mm ² , Number of connections: 2 | |
| GTIN (EAN) | 4064675027980 | | |
| Qty. | 5 ST | | |

Slotted screwdriver



Slotted screwdriver with rounded blade SD DIN 5265, ISO 2380/2, output to DIN 5264, ISO 2380/1. ChromTop tip, SoftFinish grip

General ordering data

| | | | |
|------------|----------------------------|---|--|
| Type | SDS 1.0X5.5X150 | Version | |
| Order No. | 2749380000 | Screwdriver, Blade width (B): 5.5 mm, Blade length: 150 mm, Blade thickness (A): 1 mm | |
| GTIN (EAN) | 4050118895605 | | |
| Qty. | 1 ST | | |
| Type | SDS 1.0X5.5X150 | Version | |
| Order No. | 9008350000 | Screwdriver, Screwdriver | |
| GTIN (EAN) | 4032248056316 | | |
| Qty. | 1 ST | | |

Testadapter and testsockets



Test adapters and test plugs are used for the electrical connection between terminal blocks and the test equipment. In this way, an electrical contact can be established in the wired state and measurements can be done easily.

General ordering data

| | | | |
|------------|----------------------------|--|--|
| Type | FZS 2/4 RT/80 SAKT4 | Version | |
| Order No. | 1276300000 | Plug (terminal), Plug-in connection, 2 mm ² , Number of connections: 2, Number of poles: 1, Width: 9 mm | |
| GTIN (EAN) | 4008190026080 | | |
| Qty. | 20 ST | | |