

**WIL-LWXXXX-6500D024-555SXX5.0BXXXXXXXXXX****Weidmüller Interface GmbH & Co. KG**  
Klingenbergstraße 26  
D-32758 Detmold  
Germany

www.weidmueller.com



The WIL-LED lights family: Only 8mm (9.4mm with magnet) high LED lamp for 24V DC with very high luminous efficacy and high lifespan (greater 60 000h). Very robust construction, by full potting and metal housing - waterproof (IP67). Due to its 6500K light color (daylight) suitable for the various applications. Optionally easily connectable with M12 connection. Due to the low power consumption, a small enough power supply with 24V for operation.

**General ordering data**

Order No.	2535860000
Type	<a href="#">WIL-LWXXXX-6500D024-555SXX5.0BXXXXXXXXXX</a>
GTIN (EAN)	4050118547528
Qty.	1 items

WIL-LWXXXX-6500D024-555SXX5.0BXXXXXXXXXX

Weidmüller Interface GmbH & Co. KG  
Klingenbergstraße 26  
D-32758 Detmold  
Germany

www.weidmueller.com

## Technical data

### Approvals

Approvals



ROHS Conform

UL File Number Search [UL Website](#)

Certificate no. (cULus) E354496

### Dimensions and weights

Depth	40 mm	Depth (inches)	1.5748 inch
Height	8 mm	Height (inches)	0.315 inch
Width	555 mm	Width (inches)	21.8503 inch
Net weight	350 g		

### Temperatures

Operating temperature -20 - 60°C

### Environmental Product Compliance

RoHS Compliance Status Compliant without exemption

REACH SVHC No SVHC above 0.1 wt%

EPREL Registration number 1323225

### Cable technical specifications

Cable Material	PUR	Sheathing colour	black
Housing main material	hard anodised aluminium	Cable length	5 m
Core cross-section	0.34 mm <sup>2</sup>		

### Connection data

LED Modul is attachable	no	Version	Cable end open
Number of poles	2	Coding	none
Connection thread	without	Wiring	Pin 4 (Strand: black) control white LED, Pin 3 (Strand: blue)

### Electric data

Rated voltage	24 V DC	Rated current	0.773 A
Power	18.8 W	Dimmable	Yes

### General technical data

Type of connection	Pre-assembled cable	Electronic equipment on rolling stock	No
Recommended class according to UL for NEC Class 2 use of an power supply		Shape of the LED module	Rectangular
Number of LEDs	35	Light colour (CCT)	6500K, White
Luminosity	3470 cd	Light current	2215 lm
Emitting angle	40 °	Illumination level	1059 lux
Operating life	60.000 h	Type of mounting	Screw mounting

**WIL-LWXXXX-6500D024-555SXX5.0BXXXXXXXXXX**

**Weidmüller Interface GmbH & Co. KG**  
Klingenbergstraße 26  
D-32758 Detmold  
Germany

[www.weidmueller.com](http://www.weidmueller.com)

## Technical data

Drill hole spacing	540 mm	Impact resistance	IK05
Protection degree	IP67	Efficiency class (according to EU Directive No. 874/2012)	Not required

## Material data

Material of LED cover	ESG	Housing main material	hard anodised aluminium
Material of end caps	PBT		

## Classifications

ETIM 8.0	EC000996	ETIM 9.0	EC000996
ETIM 10.0	EC000996	ECLASS 14.0	27-11-06-35
ECLASS 15.0	27-11-06-35		

**WIL-LWXXXX-6500D024-555SXX5.0BXXXXXXXXXX**

**Weidmüller Interface GmbH & Co. KG**  
Klingenbergstraße 26  
D-32758 Detmold  
Germany

**Drawings**

[www.weidmueller.com](http://www.weidmueller.com)

**Dimensioned drawing**



**Detailed drawing**

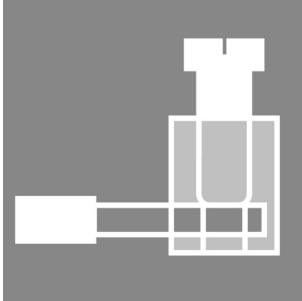


**WIL-LWXXXX-6500D024-555SXX5.0BXXXXXXXXXX**
**Weidmüller Interface GmbH & Co. KG**  
 Klingenbergstraße 26  
 D-32758 Detmold  
 Germany

[www.weidmueller.com](http://www.weidmueller.com)

## Accessories

### Screw terminal connector



Individual cable lengths are often required nowadays. In order to meet these demands, Weidmüller offers a wide range of plug-in connectors for custom assembly. Male plugs and female socket for customisable assembly for M8, M12, M16 and 7/8" connections which are highly robust and ideally suited to machine engineering, for instance. The M12 plug-in connectors offer a choice of 5 different connection systems.

The screw connection can be used in a wide range of applications. With this technology the conductor, optionally with wire-end ferrules, can be plugged into connection elements and secured with a screw. It is the classic, cheapest form of connection technology that also supports multi-conductor connections.

#### General ordering data

Type	SAIBGS-P-4A-4/6-M12	Version
Order No.	<a href="#">9457240000</a>	Field attachable connector, M12
GTIN (EAN)	4008190312275	
Qty.	1 ST	
Type	SAISGS-P-4A-4/6-M12	Version
Order No.	<a href="#">9457550000</a>	Field attachable connector, M12
GTIN (EAN)	4032248167647	
Qty.	1 ST	

### Motion sensor screw connection



Motion detector for the WIL-LED luminaire with screw connection. Switching time adjustable.

#### General ordering data

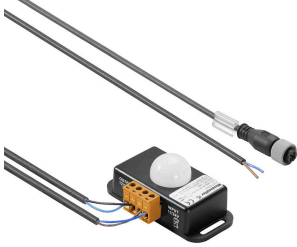
Type	WIL-BM-SK	Version
Order No.	<a href="#">2537720000</a>	
GTIN (EAN)	4050118549157	
Qty.	1 ST	

**WIL-LWXXXX-6500D024-555SXX5.0BXXXXXXXXXX**
**Weidmüller Interface GmbH & Co. KG**  
 Klingenbergstraße 26  
 D-32758 Detmold  
 Germany

[www.weidmueller.com](http://www.weidmueller.com)

## Accessories

### Motion sensor screw connection with cable



Motion detector for the WIL-LED luminaire with screw connection, 3m supply cable and M12 cable for connection to the WIL lamp. Switching time adjustable.

#### General ordering data

Type	WIL-BM-SK-M12-3.OU	Version	
Order No.	<a href="#">2537700000</a>		
GTIN (EAN)	4050118549140		
Qty.	1 ST		

### Motion sensor Jackpac®



Motion detector for the WIL-LED luminaire with screw connection, 3m supply cable and M12 cable for connection to the WIL lamp. Switching time adjustable.

#### General ordering data

Type	WIL-BM-JP-M12-3.OU	Version	
Order No.	<a href="#">2537710000</a>		
GTIN (EAN)	4050118549164		
Qty.	1 ST		

### Door switch



The WIL door switch is pre-assembled with an M12 cable and an access line. This allows for a simple Plug and Produce feature with our WIL LED lamp series.

## Door Switch

#### General ordering data

Type	WIL-TS-M12	Version	
Order No.	<a href="#">2537730000</a>		
GTIN (EAN)	4050118549188		
Qty.	1 ST		

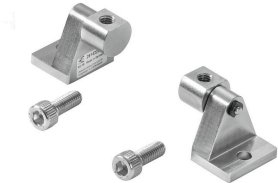
WIL-LWXXXX-6500D024-555SXX5.0BXXXXXXXXXX

**Weidmüller Interface GmbH & Co. KG**  
 Klingenbergstraße 26  
 D-32758 Detmold  
 Germany

www.weidmueller.com

## Accessories

### Swivelling holder



Swivel bracket for WIL lights Very high quality version without detent

### Swivelling holder

#### General ordering data

Type	WIL-SCHWENKHALTER	Version	
Order No.	<a href="#">2614220000</a>		
GTIN (EAN)	4050118651249		
Qty.	1 ST		

### Connect Power INSTA POWER



The single-phase INSTA-POWER switching power supplies are characterised by a wide power spectrum, compact design and good value for money. They are suitable for temperature ranges from -25°C to +70°C, have international approvals and a wide voltage input range. This makes them suitable for a wide range of applications. This also includes signal and telecommunications systems as well as automation systems with a low power requirement up to 96 Watt.

#### General ordering data

Type	PRO INSTA 30W 24V 1.3A	Version	
Order No.	<a href="#">2580190000</a>		Power supply, switch-mode power supply unit, 24 V
GTIN (EAN)	4050118590920		
Qty.	1 ST		