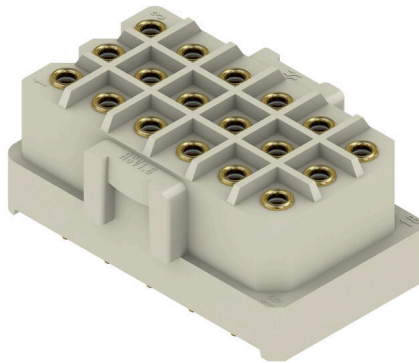


## RSV1,6 LB18 GR 3,2 AU

**Weidmüller Interface GmbH & Co. KG**  
 Klingenbergstraße 26  
 D-32758 Detmold  
 Germany

www.weidmueller.com

### Product image



Rectangular plug-in male and female connector with solder contacts for PCB applications. High connection density achieved by using several rows and crimp contacts in the mating connector. The plug-in connectors can be coded and locked to the mating connector. Supplied in cardboard box.

### General ordering data

|              |  |
|--------------|--|
| Version      | PCB plug-in connector, female header, closed side, THT solder connection, 5.00 mm, Number of poles: 18, 180°, Solder pin length (l): 3.2 mm, Gold-plated, Pebble grey, Box |
| Order No.    | <a href="#">1444200000</a>   |
| Type         | RSV1,6 LB18 GR 3,2 AU  |
| GTIN (EAN)   | 400819008034 1   |
| Qty.         | 25 items   |
| Product data | IEC: 500 V / 14 A<br>UL: 300 V / 10 A  |
| Packaging    | Box  |

## RSV1,6 LB18 GR 3,2 AU

Weidmüller Interface GmbH &amp; Co. KG

Klingenbergstraße 26

D-32758 Detmold

Germany

www.weidmueller.com

## Technical data

## Approvals

Approvals



ROHS Conform

UL File Number Search [UL Website](#)

Certificate No. (UR) E92202

## Dimensions and weights

|                          |            |                 |             |
|--------------------------|------------|-----------------|-------------|
| Depth                    | 32.6 mm    | Depth (inches)  | 1.2835 inch |
| Height                   | 14.3 mm    | Height (inches) | 0.563 inch  |
| Height of lowest version | 14.3 mm    | Width           | 23.8 mm     |
| Width (inches)           | 0.937 inch | Net weight      | 13.64 g     |

## Environmental Product Compliance

RoHS Compliance Status Compliant with exemption

RoHS Exemption (if applicable/known) 6c

REACH SVHC Lead 7439-92-1

SCIP 68d3d3f5-e017-411e-997f-7ad2b75c9062

## System specifications

| Product family                               | OMNIMATE Signal - series RSV | Type of connection                         | Board connection |
|--|------------------------------|--|------------------|
| Mounting onto the PCB                        | THT solder connection        | Pitch in mm (P)                            | 5.00 mm          |
| Pitch in inches (P)                          | 0.197 "                      | Outgoing elbow                             | 180°             |
| Number of poles                              | 18                           | Number of solder pins per pole             | 1                |
| Solder pin length (l)                        | 3.2 mm                       | Solder pin dimensions                      | d = 0.97 mm      |
| Solder eyelet hole diameter (D)              | 1.3 mm                       | Solder eyelet hole diameter tolerance (D)  | + 0,1 mm         |
| L1 in mm                                     | 25.00 mm                     | L1 in inches                               | 0.984 "          |
| Number of rows                               | 3                            | Pin series quantity                        | 3                |
| Touch-safe protection acc. to DIN VDE 57 106 | Safe from finger touch       | Touch-safe protection acc. to DIN VDE 0470 | IP 20            |
| Can be coded                                 | Yes                          | Plugging force/pole, max.                  | 9 N              |
| Pulling force/pole, max.                     | 18 N                         |  |                  |

## Material data

|                                       |             |                                       |             |
|---------------------------------------|-------------|---------------------------------------|-------------|
| Insulating material                   | PA 66/6     | Colour                                | Pebble grey |
| Colour chart (similar)                | RAL 7032    | Insulating material group             | I           |
| Comparative Tracking Index (CTI)      | ≥ 600       | Moisture Level (MSL)                  |             |
| UL 94 flammability rating             | V-0         | Contact material                      | Cu-alloy    |
| Contact surface                       | Gold-plated | Storage temperature, min.             | -40 °C      |
| Storage temperature, max.             | 70 °C       | Operating temperature, min.           | -50 °C      |
| Operating temperature, max.           | 100 °C      | Temperature range, installation, min. | -25 °C      |
| Temperature range, installation, max. | 100 °C      |                                       |             |

## Rated data acc. to IEC

|   |                        |   |      |
|---|------------------------|---|------|
| tested acc. to standard                       | IEC 60664-1, IEC 61984 | Rated current, min. number of poles (Tu=20°C) | 14 A |
| Rated current, max. number of poles (Tu=20°C) | 10 A                   | Rated current, min. number of poles (Tu=40°C) | 12 A |

## RSV1,6 LB18 GR 3,2 AU

**Weidmüller Interface GmbH & Co. KG**

Klingenbergstraße 26  
D-32758 Detmold  
Germany

www.weidmueller.com

### Technical data

|   |        |   |                   |
|---|--------|---|-------------------|
| Rated current, max. number of poles (Tu=40°C)                             | 8.5 A  | Rated voltage for surge voltage class / pollution degree II/2         | 500 V             |
| Rated voltage for surge voltage class / pollution degree III/2            | 320 V  | Rated voltage for surge voltage class / pollution degree III/3        | 250 V             |
| Rated impulse voltage for surge voltage class/ pollution degree II/2      | 2.5 kV | Rated impulse voltage for surge voltage class/ pollution degree III/2 | 2.5 kV            |
| Rated impulse voltage for surge voltage class/ contamination degree III/3 | 4 kV   | Short-time withstand current resistance                               | 3 x 1s with 120 A |

#### Rated data acc. to CSA

|                                   |  |                                   |          |
|-----------------------------------|--|-----------------------------------|----------|
| Institute (CSA)                   | CSA  | Certificate No. (CSA)             | 53975-13 |
| Rated voltage (Use group C / CSA) | 300 V  | Rated current (Use group C / CSA) | 13 A     |
| Reference to approval values      | Specifications are maximum values, details - see approval certificate. |                                   |          |

#### Rated data acc. to UL 1059

|                                       |  |                                       |        |
|---------------------------------------|--|---------------------------------------|--------|
| Institute (UR)                        | UR   | Certificate No. (UR)                  | E92202 |
| Rated voltage (Use group C / UL 1059) | 300 V  | Rated current (Use group C / UL 1059) | 10 A   |
| Reference to approval values          | Specifications are maximum values, details - see approval certificate. |                                       |        |

#### Packing

|           |           |            |           |
|-----------|-----------|------------|-----------|
| Packaging | Box       | VPE length | 180.00 mm |
| VPE width | 111.00 mm | VPE height | 46.00 mm  |

#### Important note

|                |   |  |  |
|----------------|---|--|--|
| IPC conformity | Conformity: The products are developed, manufactured and delivered according international recognized standards and norms and comply with the assured properties in the data sheet resp. fulfill decorative properties in accordance with IPC-A-610 "Class 2". Further claims on the products can be evaluated on request.  |  |  |
| Notes          | <ul style="list-style-type: none"> <li>• Additional variants on request</li> <li>• Rated current related to rated cross-section &amp; min. No. of poles.</li> <li>• Spacing between rows: see hole layout</li> <li>• Rated data refer only to the component itself. Clearance and creepage distances to other components are to be designed in accordance with the relevant application standards.</li> <li>• Long term storage of the product with average temperature of 50 °C and maximum humidity 70%, 36 months</li> </ul> |  |  |

#### Classifications

|             |             |             |             |
|-------------|-------------|-------------|-------------|
| ETIM 8.0    | EC002637    | ETIM 9.0    | EC002637    |
| ETIM 10.0   | EC002637    | ECLASS 14.0 | 27-46-02-01 |
| ECLASS 15.0 | 27-46-02-01 |             |             |

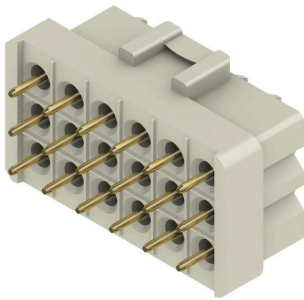
RSV1,6 LB18 GR 3,2 AU

Weidmüller Interface GmbH & Co. KG  
 Klingenbergstraße 26  
 D-32758 Detmold  
 Germany

www.weidmueller.com

Drawings

Product image



Dimensional drawing



Graph



Graph



## RSV1,6 LB18 GR 3,2 AU

**Weidmüller Interface GmbH & Co. KG**  
Klingenbergstraße 26  
D-32758 Detmold  
Germany

[www.weidmueller.com](http://www.weidmueller.com)

## Accessories

### Coding elements



Only connects what is supposed to be connected: the right connection at the right place.  
Coding elements and locking devices clearly assign connecting elements during the manufacturing process and operation  
The coding elements and locking devices are inserted prior to assembly or during the cable assembly phase.  
The Weidmüller alternative: configure online using the variant configurator to precode prior to delivery.  
Incorrect assembly on the circuit board and incorrect plugging of connecting elements is no longer possible.  
The advantage: no troubleshooting during manufacture and no operational errors by the user.

### General ordering data

|            |                            |   |  |
|------------|----------------------------|---|--|
| Type       | RSV1,6 KO                  | Version   |  |
| Order No.  | <a href="#">1567430000</a> | PCB plug-in connector, Accessories, Coding element, black, Number |  |
| GTIN (EAN) | 4008190169756              | of poles: 1   |  |
| Qty.       | 50 ST                      |   |  |