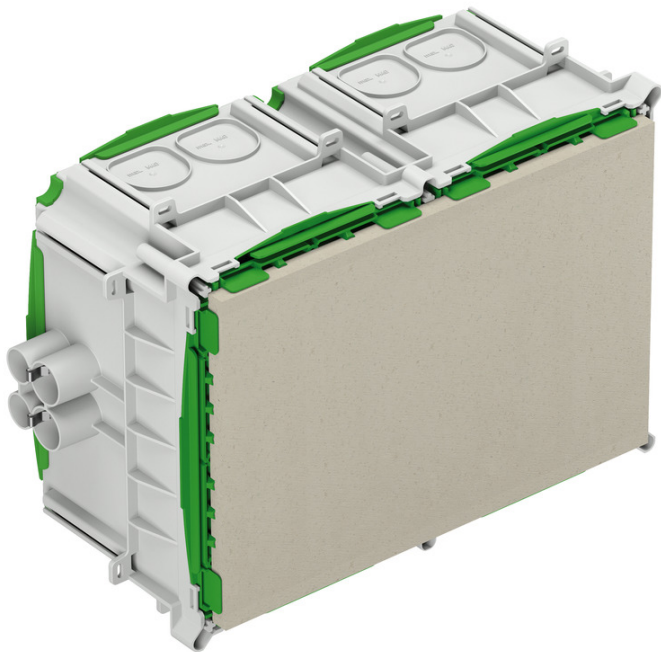


Installation housing
IBTLED 3



IBTLED 3

Installation housing

Productnumber: 98220001
Dimensions: 277 x 400 x 165 mm

Installation housing, for prefabricated construction, halogen-free, for the installation of LV/HV/LED lights and speakers, announcement and call systems, for the installation of VDE-tested lights to DIN EN 60598 (VDE 0711), and with F or MM marking, protection class IP30, rated insulation voltage: 400V AC, Halogen free

maximum installation depth for luminaires, speakers, announcement and call systems: 130 mm, lamp output halogen max. 100 W, lamp output, LED max. 47 W, additional inserts 8 x to M40, Outlet aperture: Fermacell® board, variable up to max. 200 x 300 mm, 8 combi-conduit entries 4 x M20, M25, 4 x M25, integrated conduit stopper and strain relief for M20, M25 conduits, adhesive fixing or nail installation, combination conduit insertion and membrane for perforation, sealing range M16 - M40



Technical Data

electrical characteristics

Rated insulation voltage AC:	400 V
Type of protection:	IP30
Suitable for:	Concrete construction

Colours

Base unit colour:	grey
Cover colour:	green

Dimensions

Width:	277 mm
Length:	400 mm
Height:	165 mm
Inner length:	300 mm
Inner width:	200 mm
Inner height:	155 mm
Weight:	2.115 kg

Material characteristics

Halogen free:	yes
Flammability class according with UL94:	HB
Glow-wire flammability:	650 °C (EN 60695-2-11)

mechanical properties

Type of fastening:	adhesive fixing or nail installation
--------------------	--------------------------------------

Ambient conditions

max. relative humidity 25°C:	- %
max. relative humidity 40°C:	50 %
Min. ambient temperature:	-25 °C
Max. ambient temperature:	60 °C

Ambient conditions

24h ambient temperature:	35 °C
--------------------------	-------

Sales Information

EAN:	4013902593767
ETIM Class:	EC000414
Custom tariff number:	39269097
Minimum order quantity:	1

Material

Base unit material:	Polypropylene
Cover material:	Polypropylene