

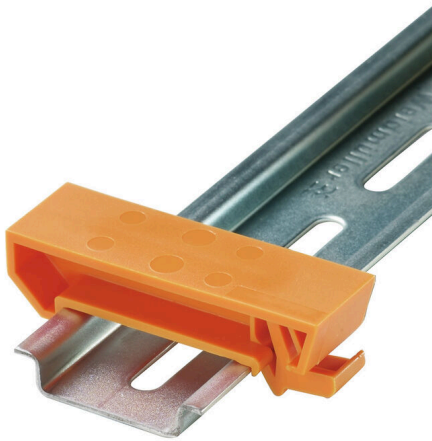
MOFU 35**Weidmüller Interface GmbH & Co. KG**

Klingenbergstraße 26

D-32758 Detmold

Germany

www.weidmueller.com

Product image

We offer a broad portfolio of mounting support for easy handling and supplementation of our products. From various tools to insulating sleeves and various screws, our components are matched to each other down to the last detail and thus facilitate assembly in compliance with the respective standards and protective regulations.

General ordering data

| | |
|------------|----------------------------|
| Version | Mounting foot (terminal) |
| Order No. | 0495660000 |
| Type | MOFU 35 |
| GTIN (EAN) | 4008 190048518 |
| Qty. | 20 items |

MOFU 35

Weidmüller Interface GmbH & Co. KG
 Klingenbergstraße 26
 D-32758 Detmold
 Germany

www.weidmueller.com

Technical data

Approvals

| | |
|------|---------|
| ROHS | Conform |
|------|---------|

Dimensions and weights

| | | | |
|------------|----------|-----------------|-------------|
| Depth | 18.35 mm | Depth (inches) | 0.7224 inch |
| Height | 58 mm | Height (inches) | 2.2835 inch |
| Width | 18 mm | Width (inches) | 0.7087 inch |
| Net weight | 5.93 g | | |

Temperatures

| | | | |
|----------------------------------|---------------|----------------------------------|--------|
| Ambient temperature | -5 °C...40 °C | Continuous operating temp., min. | -50 °C |
| Continuous operating temp., max. | 100 °C | | |

Environmental Product Compliance

| | |
|------------------------|-----------------------------|
| RoHS Compliance Status | Compliant without exemption |
| REACH SVHC | No SVHC above 0.1 wt% |

Material data

| | | | |
|----------------|--------------|---------------------------|-------|
| Basic material | Polyamide 66 | Insulating material | PA 66 |
| Colour | orange | UL 94 flammability rating | V-2 |

System specifications

| | | | |
|---------------|---------------|--------------------------|----|
| Version | Mounting foot | End cover plate required | No |
| Mounting rail | TS 35 | | |

Additional technical data

| | | | |
|--------------------------|-------|------------------|---------|
| Open sides | right | Type of fixing | Snap-on |
| Explosion-tested version | No | Type of mounting | Snap-on |

Conductors for clamping (rated connection)

| | | | |
|----------------------|-----|--------------------|--------------------------|
| Connection direction | top | Type of connection | Tension-clamp connection |
|----------------------|-----|--------------------|--------------------------|

Dimensions

| | |
|-----------------|----------|
| Pitch in mm (P) | 18.00 mm |
|-----------------|----------|

General

| | |
|---------------|-------|
| Mounting rail | TS 35 |
|---------------|-------|

Classifications

| | | | |
|-------------|-------------|-------------|-------------|
| ETIM 8.0 | EC002848 | ETIM 9.0 | EC002848 |
| ETIM 10.0 | EC002848 | ECLASS 14.0 | 27-25-03-90 |
| ECLASS 15.0 | 27-25-03-90 | | |