

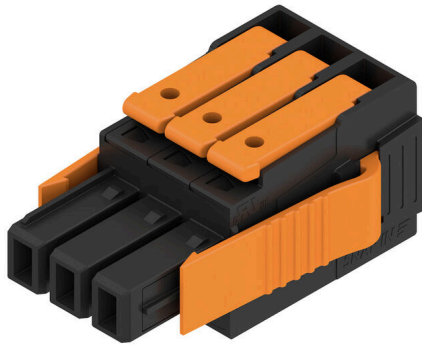
MPS 6/03 S LF TN B B

Weidmüller Interface GmbH & Co. KG
 Klingenbergstraße 26
 D-32758 Detmold
 Germany

www.weidmueller.com

Product image

SNAP IN 



General ordering data

| | |
|--------------|---|
| Version | PCB plug-in connector, female plug, Pitch in mm (P): 6.35 mm, Number of poles: 3, 180°, Box |
| Order No. | 8000168328 |
| Type | MPS 6/03 S LF TN B B |
| GTIN (EAN) | 4099987795715 |
| Qty. | 72 items |
| Product data | IEC: 1000 V / 40.3 A / 0.75 - 6 mm ² UL: 600 V / 30 A / AWG 20 - AWG 10 |
| Packaging | Box |

MPS 6/03 S LF TN B B

Weidmüller Interface GmbH & Co. KG
Klingenbergstraße 26
D-32758 Detmold
Germany

www.weidmueller.com

Technical data

Dimensions and weights

| | | | |
|------------|---------|-----------------|-------------|
| Depth | 43 mm | Depth (inches) | 1.6929 inch |
| Height | 20.5 mm | Height (inches) | 0.8071 inch |
| Width | 26.5 mm | Width (inches) | 1.0433 inch |
| Net weight | 17.14 g | | |

Material data

| | | | |
|--------------------------------|----------|----------------------------------|----------|
| Insulating material | PBT GF | Colour | black |
| Colour of operational elements | orange | Colour chart (similar) | RAL 9011 |
| Insulating material group | I | Comparative Tracking Index (CTI) | ≥ 600 |
| Moisture Level (MSL) | | UL 94 flammability rating | V-0 |
| Contact material | Cu-alloy | Contact surface | tinned |
| Storage temperature, min. | -25 °C | Storage temperature, max. | 55 °C |
| Operating temperature, min. | -50 °C | Operating temperature, max. | 125 °C |

Conductors suitable for connection

| | | | |
|---|----------------------|---|-------------------|
| Clamping range, min. | 0.5 mm ² | Clamping range, max. | 4 mm ² |
| Solid, min. H05(07) V-U | 0.75 mm ² | Solid, max. H05(07) V-U | 4 mm ² |
| Flexible, min. H05(07) V-K | 0.75 mm ² | Flexible, max. H05(07) V-K | 6 mm ² |
| w. plastic collar ferrule, DIN 46228 pt 4, 0.5 mm ² min. | | w. plastic collar ferrule, DIN 46228 pt 4, 4 mm ² max. | |
| w. wire end ferrule, DIN 46228 pt 1, 0.75 mm ² min. | | w. wire end ferrule, DIN 46228 pt 1, 4 mm ² max. | |

Rated data acc. to IEC

| | | | |
|---|------------------------|---|--------|
| tested acc. to standard | IEC 60664-1, IEC 61984 | Rated current, min. number of poles (Tu=20°C) | 40.3 A |
| Rated current, max. number of poles (Tu=20°C) | 40.4 A | Rated current, min. number of poles (Tu=40°C) | 36.3 A |
| Rated current, max. number of poles (Tu=40°C) | 36.3 A | Rated voltage for surge voltage class / pollution degree II/2 | 1000 V |
| Rated voltage for surge voltage class / pollution degree III/2 | 1000 V | Rated voltage for surge voltage class / pollution degree III/3 | 800 V |
| Rated impulse voltage for surge voltage class/ pollution degree II/2 | 8 V | Rated impulse voltage for surge voltage class/ pollution degree III/2 | 8 kV |
| Rated impulse voltage for surge voltage class/ contamination degree III/3 | 8 kV | | |

Rated data acc. to UL 1059

| | | | |
|---------------------------------------|--------|---------------------------------------|--------|
| Rated voltage (Use group B / UL 1059) | 600 V | Rated voltage (Use group C / UL 1059) | 600 V |
| Rated voltage (Use group D / UL 1059) | 600 V | Rated voltage (Use group F / UL 1059) | 1000 V |
| Rated current (Use group B / UL 1059) | 30 A | Rated current (Use group C / UL 1059) | 30 A |
| Rated current (Use group D / UL 1059) | 5 A | Wire cross-section, AWG, min. | AWG 20 |
| Wire cross-section, AWG, max. | AWG 10 | | |

Important note

Notes

- Rated current related to rated cross-section & min. No. of poles.
- P on drawing = pitch
- Rated data refer only to the component itself. Clearance and creepage distances to other components are to be designed in accordance with the relevant application standards.
- Long term storage of the product with average temperature of 50 °C and maximum humidity 70%, 36 months

MPS 6/03 S LF TN B B

Weidmüller Interface GmbH & Co. KG
Klingenbergstraße 26
D-32758 Detmold
Germany

www.weidmueller.com

Technical data

Classifications

| | | | |
|-------------|-------------|-------------|-------------|
| ETIM 8.0 | EC002638 | ETIM 9.0 | EC002638 |
| ETIM 10.0 | EC002638 | ECLASS 14.0 | 27-46-02-02 |
| ECLASS 15.0 | 27-46-02-02 | | |

MPS 6/03 S LF TN B B

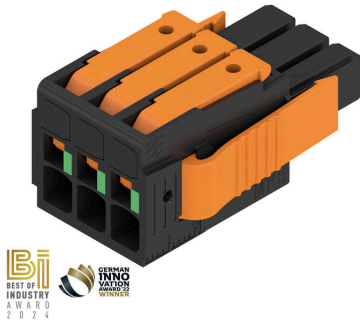
Weidmüller Interface GmbH & Co. KG
Klingenbergstraße 26
D-32758 Detmold
Germany

www.weidmueller.com

Drawings

Product image

SNAP IN 



Dimensional drawing

